



Boone County, Indiana, U.S.A.

\$3.00

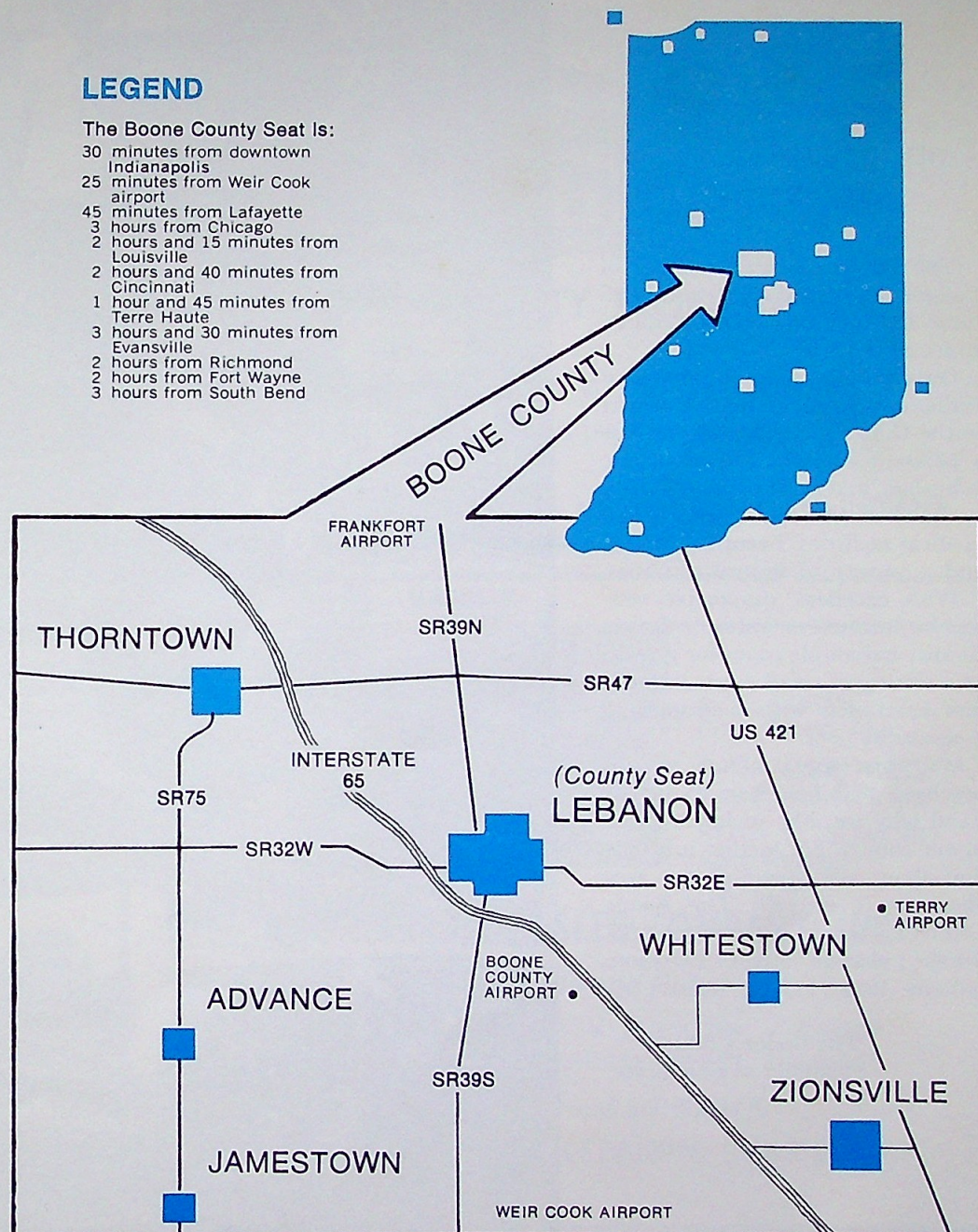
Table of Contents

	Page
Boone County Map	1
Welcome!	2
Once Upon a Time	4-6
Church Life Important	7-8
Educational Opportunities	10-12
Modern Health Facilities	14-15
Full Leisure Living	16-18-19
Community Advantages	20-21-22-23
Diverse Industrial Scene	24-25
Stores and Banks Convenient	26-27
A Bright Future	28

Published by
BILLINGSLY GRAPHIC ARTS STUDIO
Lebanon, Indiana 46052

LEGEND

The Boone County Seat is:
30 minutes from downtown
Indianapolis
25 minutes from Weir Cook
airport
45 minutes from Lafayette
3 hours from Chicago
2 hours and 15 minutes from
Louisville
2 hours and 40 minutes from
Cincinnati
1 hour and 45 minutes from
Terre Haute
3 hours and 30 minutes from
Evansville
2 hours from Richmond
2 hours from Fort Wayne
3 hours from South Bend



Welcome!

The Boone County Chamber of Commerce extends a warm welcome to you from Boone County, Indiana, U.S.A.

Only 35 miles from the center of Indianapolis, the 11th largest city in the U.S., Boone County presents a pleasant combination of urban, suburban, and rural living.

Our area offers good schools and medical facilities, beautiful homes, and a variety of leisure activities.

With excellent supportive services for business or industry, Boone County has ample room for growth in a setting of small town friendliness combined with metropolitan accessibility.

We hope the contents of this brochure will help you to understand why we take so much pride in our county. For further information about any aspect of our area please write or call: The Boone County Chamber of Commerce, 221 North Lebanon Street, Lebanon, Indiana, 46052, 317-482-1320.

The Boone County
Chamber of Commerce





HARMAN

AGENCY, INC.

*Highly respected
in the Insurance and
Real Estate business
since 1943*

212 WEST MAIN ST.
LEBANON
482-2250

"We Sell The Earth and Insure Everything On It"



Your
Home
Decoration
Center

BOONE COUNTY FLOORING CO.

Call 482-4320 for "At Home Shopping"
AND WE'LL BRING THE STORE TO YOU

825 WEST MAIN ST.

• LEBANON, INDIANA

H. & H. AUTOMOTIVE SUPPLY, INC.

MACHINE SHOP SERVICES

NAPA

*Your NAPA Jobber
is a Good Man to Know*

*Complete Line of Auto, Truck and Tractor Parts
Plus Import Car Parts*

1212 WEST MAIN STREET • LEBANON • PH. 482-1180



A. L. DORAN
Pres., Treas., Mgr.

C. E. (MIKE) HESS
Vice Pres., Ass't. Mgr.

KEITH M. SOWERS
Secy. Retired

BOONE GRAIN & SEED COMPANY, INC.

Wholesale and Retail

GRAIN • FEED • SEED • FERTILIZER • GARDEN
SEED & PLANTS • HORSE & PET SUPPLIES

Phone 317-482-4640 and 482-1170

310 S. Lebanon St. • LEBANON, INDIANA 46052



Teddy Roosevelt at the Big Four Depot, Oct. 13, 1910.

Once upon a time

Indiana had been a state for fourteen years before Boone County officially became a unit of local self-government on April 1, 1830. The Indiana General Assembly passed an act of January 29, 1830, ordering the creation of the state's sixty-third county, "north of Marion and Hendricks Counties," and named it in honor of the famous

S. Lebanon St. looking north, 1905.



Kentucky frontiersman, Daniel Boone.

Appointed by Governor James B. Ray as the new county's first sheriff, Austin Davenport, living in what was to shortly become Eagle Township, supervised the organization of county government. Incidentally, Davenport made the first U. S. Decennial Census of Boone County in 1830, finding it to have a total of 622 inhabitants.

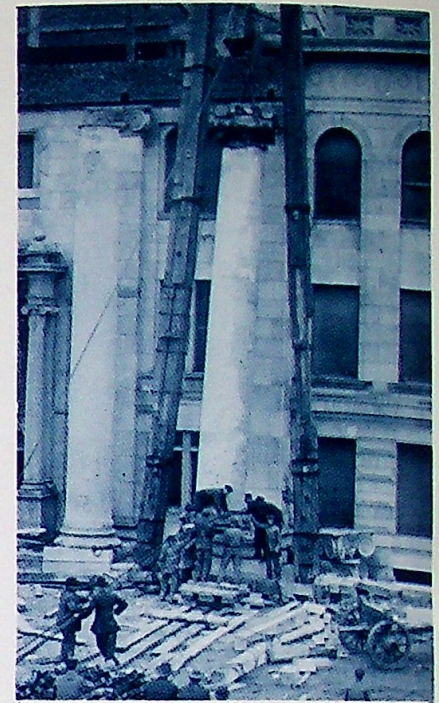
Meeting in Davenport's log cabin home on June 7, 1830, a county seat locating commission previously appointed by the Legislature, chose Jamestown, the county's first established settlement and then consisting of some half-dozen log cabins and possibly a general store, as the county capital.

Since Jamestown was situated in

the far southwest corner of the county, early settlers complained so loudly that on January 26, 1832, the Legislature ordered a new county seat for Boone, to be located within two miles of the unit's geographical center. A second appointed county seat locating commission concluded its duty on May 1, 1832, by selecting Lebanon. On the same day, Adam Miller French, a commission member, named the new town after his home town of Lebanon, Ohio.

The October, 1832 term of the Boone Circuit Court was conducted in the home of Cornelius Westfall, in Thorntown. In the spring of 1833, court was held on the porch of Abner Longley's cabin, in Lebanon. The court and county offices moved into the newly constructed two-story log courthouse on the north side of the public square in the fall of 1833.

In the first six decades of its existence, Boone County saw a number of hamlets, villages, and little towns dotting its 420 square



Putting up courthouse columns, 1910. They are 35 ft. tall and weigh 30 tons each. The largest uncut limestone columns in the world.

miles of expanse. Many of these have long since disappeared, but Jamestown, Thorntown, Lebanon,

Constructing present courthouse, 1910.





Your Lebanon Utilities continuously strives to improve its facilities for giving better water and electrical service to the growing community of Lebanon.

Serving Your Needs Since 1894

201 E. MAIN ST. • 482-5100



FOR THE CONTRACTOR . . .
FOR THE "DO-IT-YOURSELFER" . . .

we carry a complete line
of building materials, top
line brand name paints,
hardware, tools, panelling,
and flooring . . .

*for your convenience, we have two
"easy-to-get-to" locations . . .*

THE LUMBER CENTER

303 W. South St. • LEBANON

482-0600

METZGER LUMBER CENTER

Main and Pine • ZIONSVILLE

873-3327

QUALITY MATERIALS
MLC
DEPENDABLE SERVICE



Merchants Day In Lebanon, Aug. 1, 1895.

Whitestown, Zionsville, and Advance are still much in evidence as populous communities and busy trading centers.

Lebanon was first incorporated as a town in 1838, an action that was rescinded three years later. In 1853, it was reincorporated, and in 1875, its citizens voted to incorporate as a city, a status it has since enjoyed. From the village of a few rustic cabins, a store or two, and a

log courthouse in the 1830's, Lebanon has grown into a bustling, thriving, friendly city of lovely homes, prosperous businesses, and booming industries, with a population now estimated at 10,500 citizens.

Boone County is a rectangle, 17½ miles north and south, and 24 miles east and west, encompassing 268,800 acres. Much of its surface consists of a wide, fertile, un-



First car to be driven into Lebanon. Steam powered Locomobile from Attica, May 23, 1900.

dulating plateau forming the divide between the White River and Wabash River watersheds.

In its first sixty years, Boone County made rapid, progressive growth in development and population, climbing from a head count of 622 citizens in 1830 to a total of 26,572 in 1890. Its numbers declined to 22,081 in 1940, but since that time it has been gradually increasing. The 1970 U.S. Census placed the count at 30,870, but with the continuing growth in the four years elapsed since 1970, Boone County's total population is now an estimated 32,544 as of October 1, 1974.

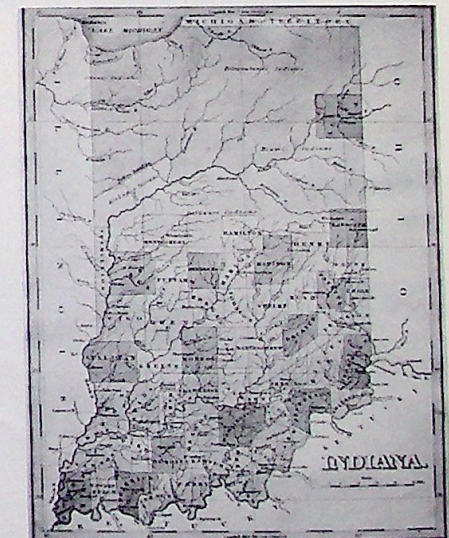


Zionsville about 1885. Local croquet team in foreground



Grand Old Opera stage located on the 3rd floor of what is now the Bennett Furniture store in Lebanon.

Boone not a county yet, 1829.



First Boone courthouse, 1856-1909.



Zionsville, 1875. Grange wagon in front of store where the Farmers State Bank is now located.

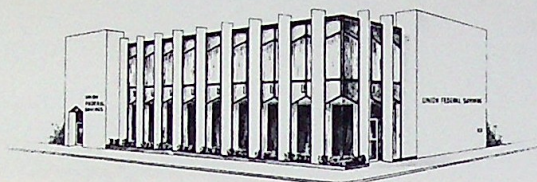


Building interurban track through Lebanon, 1903.

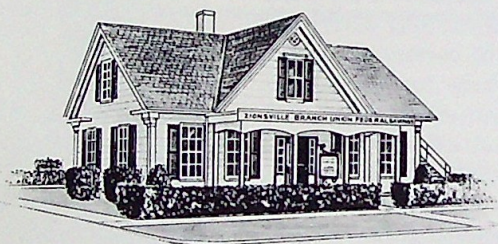
union federal

SAVINGS AND LOAN ASSOCIATION

Serving Boone County Since 1934



102 North Lebanon Street
LEBANON, INDIANA 46052
Phone (317) 482-4400



115 South Main Street
ZIONSVILLE, INDIANA 46077
Phone (317) 873-3101

We invite you to use our friendly services

INSURED SAVINGS ACCOUNTS
SAVE-BY-MAIL
CHRISTMAS CLUB ACCOUNTS
LOW COST HOME FINANCING
MONTHLY REDUCTION MORTGAGE LOANS

SAVINGS ACCOUNTS INSURED UP TO \$20,000

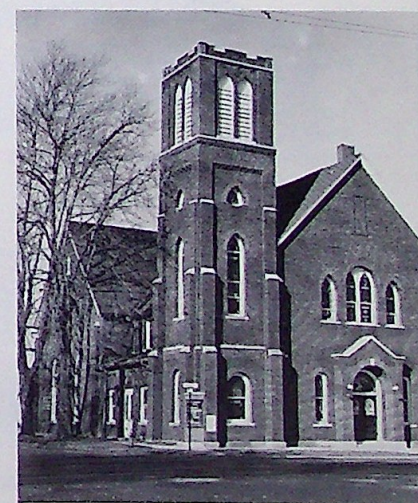


Church life important

Since the establishment of the first Boone County church in 1829, churches and their influence have played an important part in community development.

Today, 15 denominations have 64 buildings with a variety of religious architecture lending beauty to town and countryside.

Churches provide spiritual lead-





ROBERTS FARM EQUIPMENT CO., INC.



*Leadership in Product
and Service Since 1960*

317-482-1711

LEBANON, INDIANA



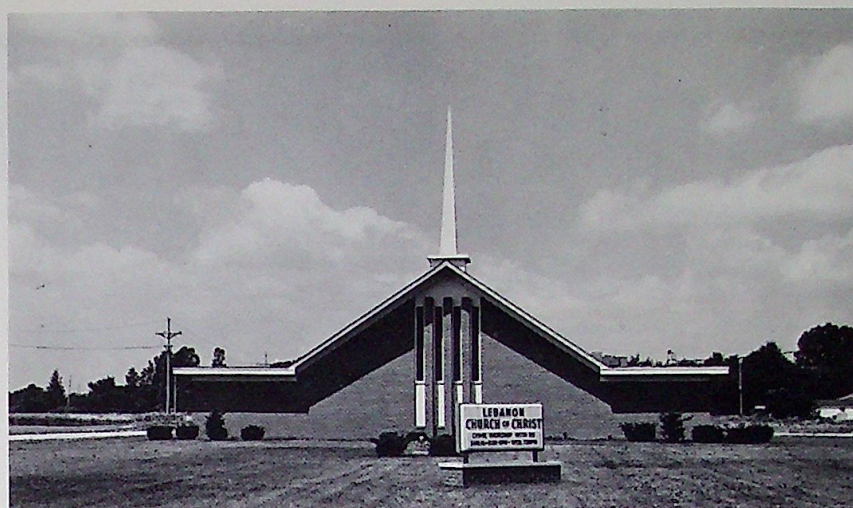
Akerman's

MAX COWAN - OWNER

Prescriptions • Drugs • Photo Processing • Cameras • Panasonic
Pipes • Gifts • Greeting Cards • Letter Papers • Cosmetics
Baby Needs • Candles • Cowan's Cubbard (Use Our Drive-Up Window)

ON THE SQUARE, LEBANON

317-482-0180



ership in many areas of county life and offer special events for all ages. Newcomers are specially welcomed and quickly drawn into activities.

Churches in the county also serve as a source of help for those who need private counseling, with several pastors trained in personal guidance.

Another facet of religious life in the area is the Boone County Ministerial Association, which attempts to provide more effective pastoral services for all persons, regardless of church affiliation.



Serving Boone County Since 1899

MEMBER F.D.I.C.

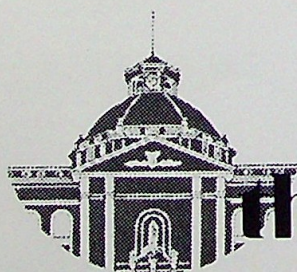
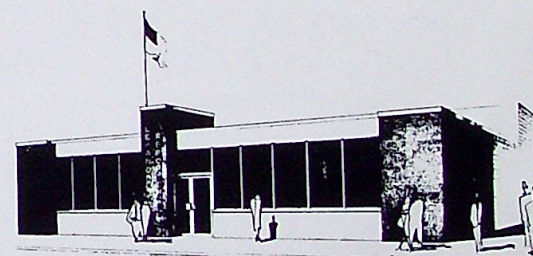
CITIZENS BANK & TRUST COMPANY



LEBANON, INDIANA
PHONE 482-3300

On the way to your future

Boone County's only daily newspaper
serving 28,000 readers
with all the local news, sports and social events.



the Reporter

117 E. Washington St. • Lebanon, Ind. 46052

482-5400—Phones—482-4650

Educational opportunities



Well-equipped educational facilities and a combination of traditional and innovative teaching methods are found in all of Boone County's three public school districts.

Lebanon Community Schools, Western Boone Community Schools, and Eagle-Union Schools educate nearly 8,000 students each year.

Largest of the school systems is the Lebanon district, which includes high school for grades nine through 12, middle school for grades six, seven, and eight, and four elementary schools for kindergarten through fifth grade.

The Lebanon Middle School, a new \$2.4 million structure, opened in the fall of 1974, while all of the system's other buildings are also recently constructed or well-maintained for pleasant learning conditions.

In the western part of the county, the new Western Boone High School also opened in 1974. The \$7 million educational plant provides comprehensive learning for students in grades seven through

12. Two elementary schools serve the district's younger children.

Eagle-Union Schools, located in the southeast corner of Boone County, includes the four-year-old Zionsville High School, Zionsville Junior High (grades 6, 7, 8), and two elementary schools.

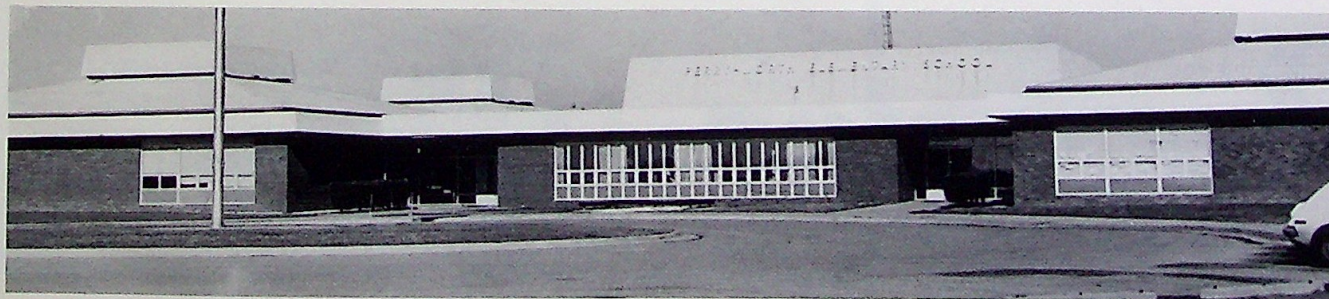
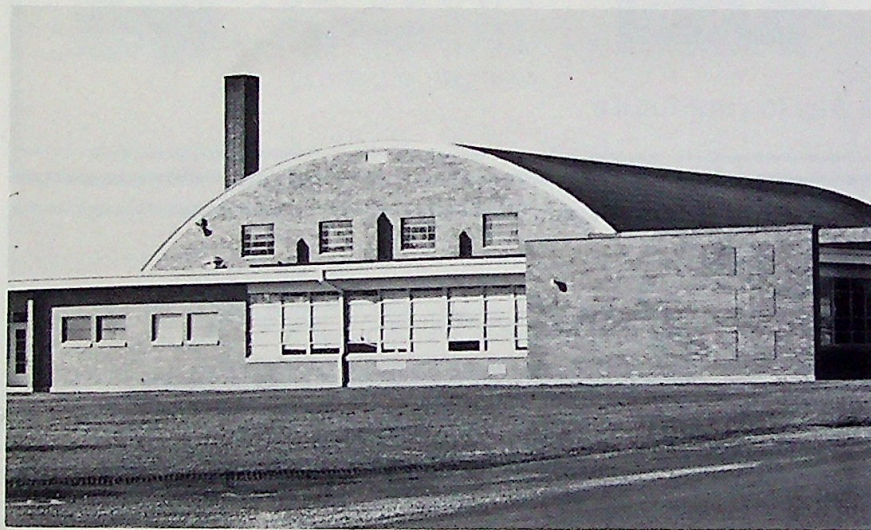
In addition to strong academic programs, Boone's schools offer an array of activities in sports, music, and other areas. Both academic and extra-curricular programs receive enthusiastic community interest and support.


Educational needs of pre-school children are well met in Boone County with four private nursery schools and one professional day care center.

With a great proportion of its students seeking higher education, Boone County is well located for students and adults who wish to continue academic or vocational training.

Within the county, the three high schools offer adult education courses, as does the Boone County YMCA.

With Indianapolis only 30 min-





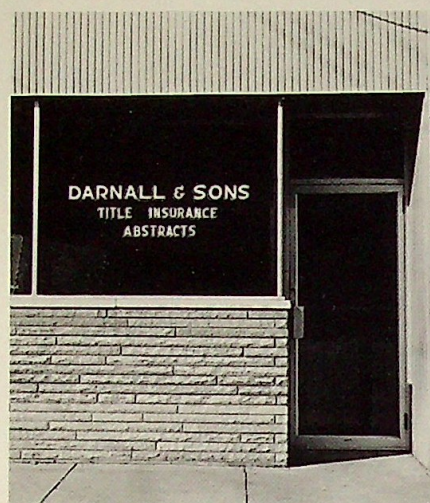
**Saturday, 8:45 a.m.
Only 15 minutes til
Farmers State Bank
starts a new day.**

That's right! Farmers State Bank in Zionsville makes every Saturday from 9:00 a.m. to 3:00 p.m. a bank day for the convenience of its customers throughout Boone County. In fact — there's always full service banking facilities conveniently ready for everyone looking for a sound financial future. Come by our Main Office here on Main Street or our Drive-In office in the Boone Village Center. We will be happy to serve your banking needs.

FARMERS STATE BANK

**98 South Main Street • Boone Village Center
Zionsville, Indiana**

**Member Telephone
F.D.I.C. 873-3377**



DARNALL & SONS, INC.

Abstracters
Title Insurance

Manager
WARREN E. ZARYCHTA

Reliable Service
Since 1880

112 S. Meridian St.
LEBANON, INDIANA
Phone 482-3880



Taylor-Smock Co., Inc.

QUALITY FURNITURE SINCE 1900

FURNITURE
CARPETING
CUSTOM DRAPES

Interior Decorator &
Design Services

482-4240

2400 N. Lebanon St.
LEBANON, INDIANA 46052

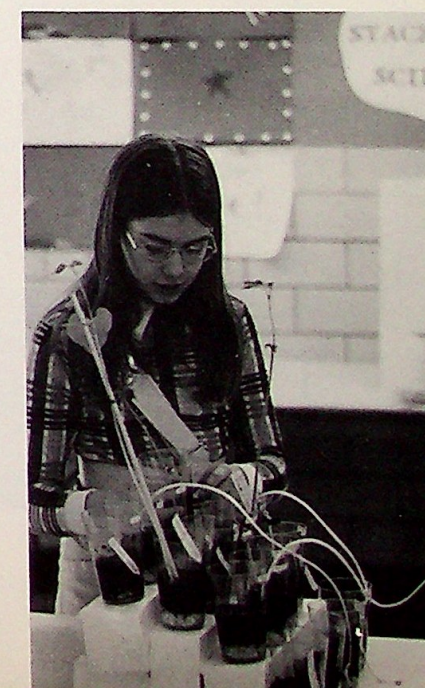
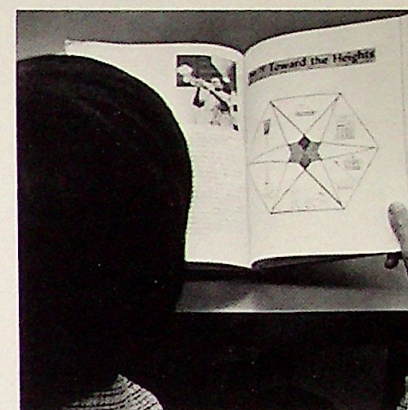
utes away, county residents have access to the Indianapolis campus of Indiana and Purdue Universities, which includes law and medical schools.

Other schools in Indianapolis are Butler University, Indiana Central and Marian Colleges, Indiana Vocational-Technical College, Christian Theological Seminary, and many trade and technical schools.

Also a short drive in other directions are the main campus of Purdue University at West Lafayette and Wabash College at Crawfordsville.

In another educational area, Boone County is part of a tri-county area for the mentally retarded and is the location for a modern sheltered workshop facility.

Lebanon is also the home of the Indiana United Methodist Children's Home, a residential treatment center for children with special emotional needs.





Royal

DRYCLEANERS-LAUNDRY

Shirts • Rentals
Complete Commercial Service

482-2820

503 WEST MAIN ST.

• LEBANON, INDIANA



STEWART - WARNER

HEATING - AIR CONDITIONING

Manufacturers of Quality Heating and Air Conditioning Equipment For Residential, Apartments, Mobile, Modular Homes, and Commercial Buildings

- Oil & Gas Fired Furnaces
- Oil Fired Boilers
- Oil Burners
- Electric Furnaces
- Air Conditioning Units

STEWART-WARNER CORPORATION
 Heating-Air Conditioning Division
 LEBANON, INDIANA

Grant City

*The Grant Store Offers
Complete Needs For The Entire Family*



**the more for your
moneysworth store®**

Phone 482-2601

2310 LEBANON • GRANT PLAZA • LEBANON, IND.



HOME NATIONAL BANK

*Complete Banking
Service
Drive-In-Window
Bank By Mail*

436-2222

117 E. Main St.
THORNTOWN, IND.

Modern health facilities

A modern, accredited county hospital and quick access to the largest medical center in the United States provide Boone County residents with complete health care and facilities.

Witham Memorial Hospital, located in Lebanon, is a well-maintained, 83 bed medical complex with 155 employees and 15 doctors on the staff.

Important features of the hospital include a progressive laboratory, a coronary intensive care unit, continuous emergency care, and a 24-hour ambulance service operated in cooperation with the county.

The hospital also offers special services for business and industry, including physical examinations and audiological testing.

Future plans for the hospital call for new construction to be completed by 1977 which will house new patient handling areas, a cafeteria and kitchen, and new surgical, obstetric, and intensive care units.

The hospital will soon add a physical therapy department and will serve as the location for a new

out-patient community mental health clinic.

A recently organized volunteer guild provides services and support for the hospital from throughout the county.

Witham Memorial Hospital works cooperatively with medical facilities in near-by Indianapolis and in Lafayette, each approximately 30 minutes away.

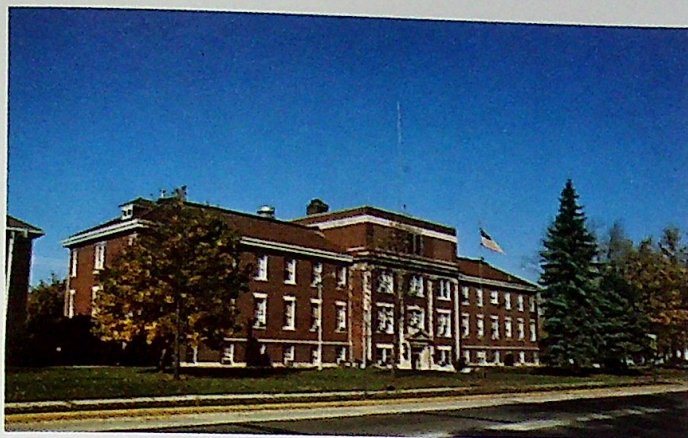


The Indiana-Purdue University Medical Center at Indianapolis is the largest patient care complex in the state, and in the United States.

This giant operation has established a unique system in which any or all specialty divisions can inter-relate and consult to provide expert care for each patient.

Consulting doctors from the medical center travel frequently to Witham, while medical and nursing students from the campuses also work on the hospital's staff.





Boone County residents also have the advantage of being near the 11 other major hospitals in Indianapolis.

In other areas of health care, the county employs a health department staff which travels constantly to maintain modern health standards.

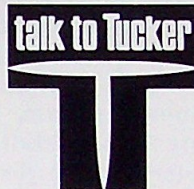
In specialized care for the elderly, there are three private nursing homes in Lebanon, with plans for the addition of a fourth. The retirement village operated by Baptist Homes and Hospitals outside Zionsville also provides nursing and hospital care.



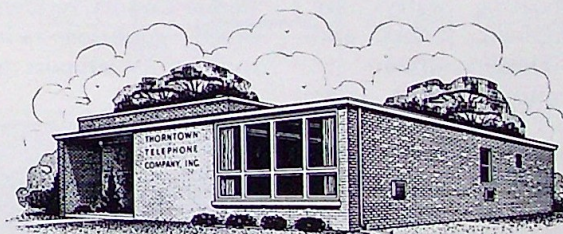
Serving Lebanon, Zionsville and All of Boone County

2274 EAST 116TH ST., CARMEL, IN 46032
317-846-7751

7333 ROCKVILLE RD., INDIANAPOLIS, IN 46224
317-243-8376



**F. C. Tucker
Company, Inc.** REALTORS/
DEVELOPERS



THORNTOWN TELEPHONE CO., INC.

*Serving the Thorntown,
Clarks Hill-Stockwell Area*

Business Office 436-2273
115 E. Bow • THORNTOWN, INDIANA

Full leisure living

Using leisure time enjoyably is easy in Boone County where a wealth of recreational activities is available.

City and rural parks offer play, picnic, and camping facilities. The Lebanon Memorial Park and Old Mill Run Park near Thorntown are two of the county's larger relaxation spots.

Golfers speak highly of the local courses which are easy to reach and well manicured.

Lebanon is famous for its beautiful Ulen Country Club and 18-hole golf course, which recently celebrated its 50th year of golfing and social activities.

Other courses include the Golf Club of Indiana, a semi-public 18-hole course, and one private and four public nine-hole courses.

Excellent boating waters are close for fishermen, sailors, and water skiers. Three reservoirs are within 30 minutes, while large lakes are one or two hours away.

Professional sports enthusiasts can find baseball, basketball, hockey, and football in Indianapolis where the new Market Square Arena seats 17,500 spectators.

Indianapolis is also a national center for automobile racing with the annual 500 Mile Race, the Hoosier Hundred, and the National Drag Races.

Cultural activities are another aspect of leisure in Boone County.

The new Patrick Henry Sullivan Museum in Zionsville presents a rich look at the past, in keeping

with the 15 year community program of developing the area in a colonial village theme. Three historical societies in the county study and maintain important points of the local heritage.

Amateur musical and theater groups give productions in both Lebanon and Zionsville.

In Indianapolis the best of the performing arts appears at Clowes Hall, including the Indianapolis Symphony. Starlight Musicals offers popular summer theatre, while Market Square Arena and the Convention Center feature headline performers.

Art enthusiasts are delighted with the beautiful grounds and buildings at the Indianapolis Museum of Art, which is also only 30 minutes from Boone County. Boone County residents have combined tradition with extensive community support to establish a

record for exciting yearly fairs and festivals.

The annual 4-H Fair, held in July at the county fair grounds south of Lebanon, is widely recognized for its outstanding facilities



LEBANON CONCRETE SERVICE



"You Only Pay For What You Use"

• **QUICK DELIVERY** •

P.O. BOX 444 • 1 MILE N. OF BROWNSBURG EXIT ON OLD 52

769-6151

Kenneth Montgomery Home Phone **482-0464**

F & L SALES SERVICE & RENTALS

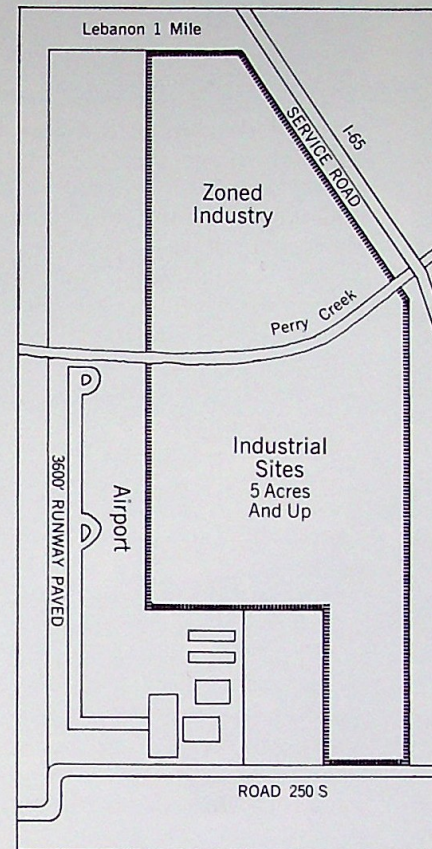
Complete Line of Tools for
HOME • INDUSTRY • CONTRACTOR

HOMELITE®

Chain Saws, Utility Trailers, Riding Mowers,
Push Mowers, Garden Tractors.

"We rent almost anything!"

901 WEST ELM • LEBANON • 482-2041



DEVELOPING 140 ACRE INDUSTRIAL PARK AND AIRPORT

Light industrial sites of 5 acres or more conveniently located on I-65 service road, one mile from Lebanon and easement to the 3600 foot long paved runway at Boone County Airport.

**FLIGHT INSTRUCTION
AIRPLANE RENTAL
HANGAR AND TIEDOWN SPACE
SERVICE AND SUPPLIES**

482-4993 • 482-2041



and activities which provide a showcase for the many talents of youth and adults.

A beautiful queen, tractor pulls, pie-eating contests, a glittering midway and special entertainment are only part of the wealth of things to do and see at this event.

Everyone gets a chance to participate in the observation of the

Fourth of July in Lebanon and Zionsville.

In Lebanon, a week-long festival of activities precedes the national birthday, including a tennis tournament, square dancing, teenage band contest, art show, and queen pageant.

The big day itself finds thousands of people lining the streets

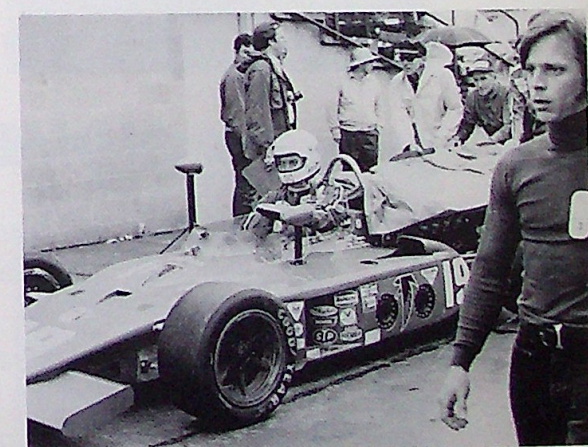
for a colorful, old-fashioned parade, complete with bands, historic theme floats, and military units. The celebration is completed with picnics, baseball games, and a dazzling fireworks display.

Zionsville's colonial atmosphere sets an historic stage for its Fourth of July celebration, which also features parades, band concerts, fire-

works, and many other activities.

Autumn festivals are numerous on the Boone County scene. Zionsville's Fall Festival, Whitestown's Pioneer Days, and the Festival of the Turning Leaves at Thorntown all emphasize the historical tradition and fall beauty of the area.

Boone residents are also within a quick drive of the state's two





largest special events.

The 500 Festival and Parade in Indianapolis provide excitement before the annual running of the 500 Mile Race each May at the Indianapolis Motor Speedway.

Late August is the time of the Indiana State Fair, also in Indianapolis, where a variety of national entertainers perform and many other interesting events are presented.



BUILD A BETTER FUTURE ON YOUR FARM

You can depend upon us for

- MANAGEMENT
- APPRAISAL
- CONSULTATION
- REAL ESTATE SALES

DUFF FARM MANAGEMENT SERVICE, INC.



State Road 39 North
P. O. Box 547
Lebanon, Indiana 46052
Phone 317 482-5550

Community advantages

Ample housing, efficient protection and utility services, good transportation, and modern communications media are all assets of the total Boone County community.

Attractive residential areas in a variety of price ranges provide quality housing and good neighborhoods near schools, shopping, and churches. New home construction is underway in many locations, while well preserved older homes are also on the market.

Several modern apartment com-

plexes are situated in Lebanon and Zionsville, and those who dream of a home in the country can find attractive rural properties.

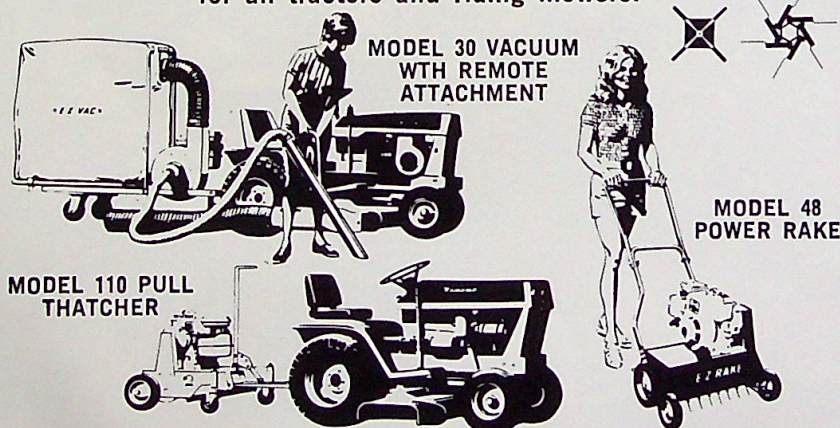
Boone County is in a central geographical position for excellent transportation service for industry and business, or for the commuter.

Interstate 65 runs through the county, going south into Indianapolis where seven interstate highways converge, and north to Lafayette and Chicago.

Weir Cook Airport in Indianap-

Made right here in Lebanon . . . WORLD'S BEST POWER VACUUMS AND RAKES!

for all tractors and riding mowers!



E-Z RAKE, INC.

1001 S. RANDELL RD. • LEBANON, INDIANA • (317) 482-1662

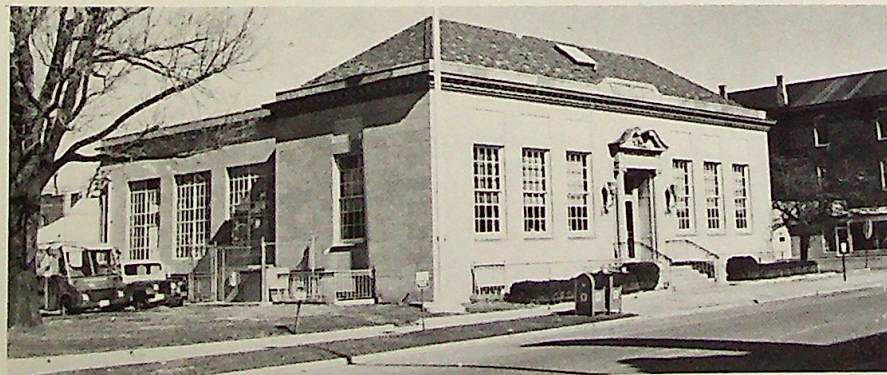




olis, a major midwestern air travel center, is a quick 25 minutes drive from Lebanon. Private business and pleasure planes use two local airfields.

Three bus lines offer service through the county, while Lebanon has two taxi companies.

Competent police and sheriff's departments are based throughout



- Residential
- Farms
- Commercial
- Building Sites

NAY REALTY


LEBANON OFFICE
1111 N. Lebanon St.
482-4560



THORNTOWN OFFICE
121 E. Main St.
436-7222

FRANK NAY, REALTOR • RES. PHONE 436-7462

HERSCHELL'S



HOUSE OF APPLIANCES

"EXTRA YEAR"

*730 days
of service
after you buy!*

126 W. WASHINGTON ST. • LEBANON • 482-5260



the area, and trained fire department personnel are on duty around the clock.

Local newspapers are The Reporter, a daily newspaper published in Lebanon; the Zionsville

Main Street, issued bi-weekly, and the Zionsville Times and the Jamestown Press, weekly papers. "Boone Magazine" is published monthly in Zionsville.

Radio station WNON/FM is lo-

LENOX LINCOLN • MERCURY



328 WEST SOUTH STREET • LEBANON, INDIANA 46052 • CALL 482-1350 FOR SERVICE



RICK LENOX

**Our Future Depends
On Satisfied Customers**



DICK LENOX



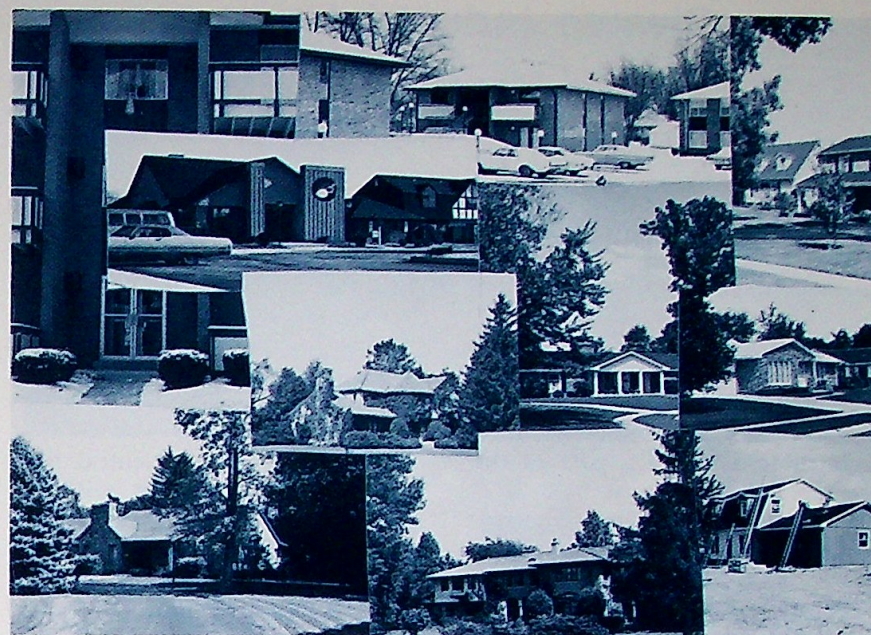
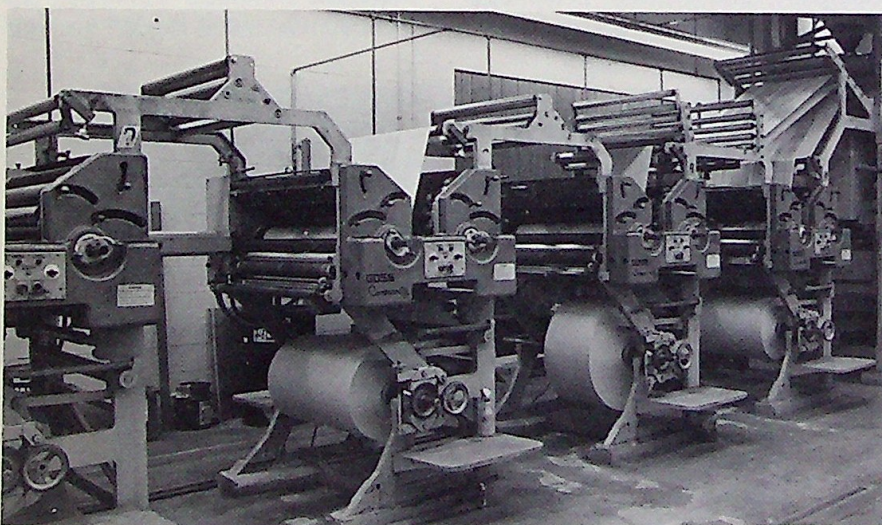
cated in Lebanon and broadcasts throughout the county and surrounding areas. Cable television is available for Lebanon residents.

Boone County is also within the circulation and reception boundaries of all Indianapolis media.

Four telephone companies and four major utility companies operate in the county, ensuring efficient

service for homes and businesses.

Community life includes many opportunities for involvement in volunteer, civic, and interest groups, which flourish in town and country. Active Newcomers Clubs quickly welcome residents and are a means of swiftly becoming acquainted with Boone County's many friendly citizens.



PALACE HOMES, INC.

Larry L. Pittman, President



Offices located in Lebanon, Indiana,
at 1307 W. South Street, Suite 1

482-2500 • 482-2971 • 873-5722



Diverse industrial scene

The industrial side of Boone County includes a diversified base of manufacturing, printing, and construction plants.

Business forms, a variety of filters, industrial blowers, vacuum and thatcher units for small tractors, and heating and air conditioning equipment are some of the products currently being manufactured in the county.

Specialty welding, glazing construction, and educational music publishing are also a part of the commercial community.

The Boone area offers many advantages for new office, warehouse, or factory location and operation.

Centrally situated in the heart of the industrial midwest, Boone

County's natural topography is devoid of any barriers and offers abundant acreage for growth.

Proximity to major markets in the midwest—Chicago, St. Louis, Cincinnati, Detroit, Louisville—also makes Boone County a good business site.

Auto and truck transportation are provided by Interstate 65 and by good state highways, with five trucking firms servicing the county daily.

The Pennsylvania Central Railroad Company handles rail shipping needs.

Air transportation is primarily from Weir Cook Airport, only 25 minutes by car via I-65. Near Lebanon are Terry and Boone County



airports, smaller fields with hard surfaced runways capable of handling twin engine aircraft.

The county also has sufficient supplies of natural resources and efficient utilities.

Telephone companies are the Indiana Bell Telephone Company, the Thorntown Telephone Company, the Hendricks Telephone Company, and United Telephone Company.

Utilities which serve various parts of the county are the Indiana Gas Company, Public Service of Indiana, the Boone County REMC for rural electricity, and the Lebanon Utilities for electricity and water. Water and sewage facilities are administered also by the governing units of the county's smaller communities.

Recent estimates show that approximately 4,000 skilled and un-





skilled workers live in Boone County, many of whom commute to Indianapolis but who would prefer to work nearer their homes.

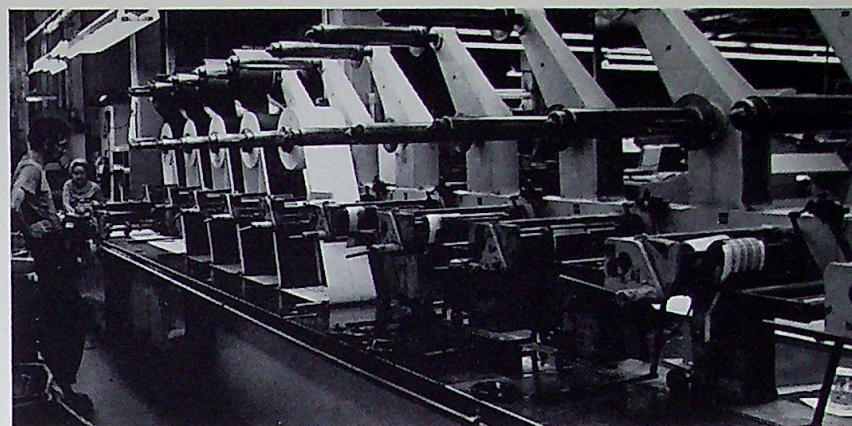
Technical and trade schools and the campuses of Indiana and Purdue Universities in Indianapolis and Lafayette offer further training for workers.

Tax rates in Boone County are lower than average for the midwest, and commercial land costs are com-

petitive with other areas.

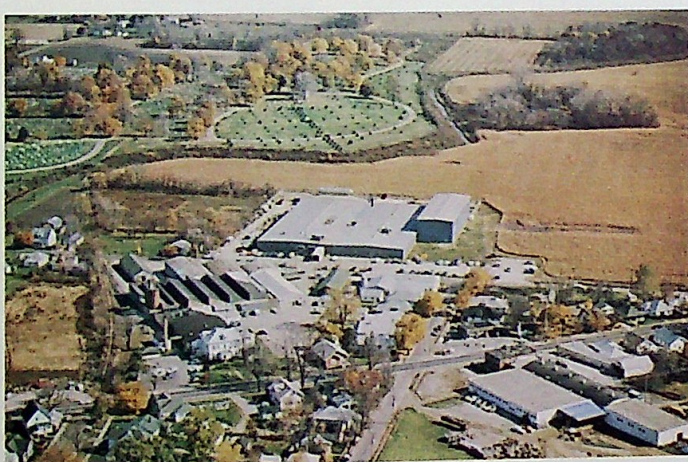
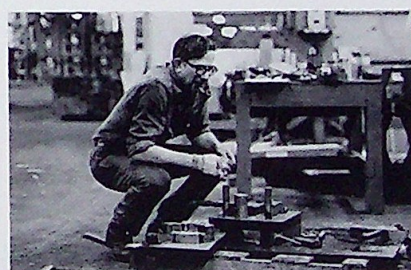
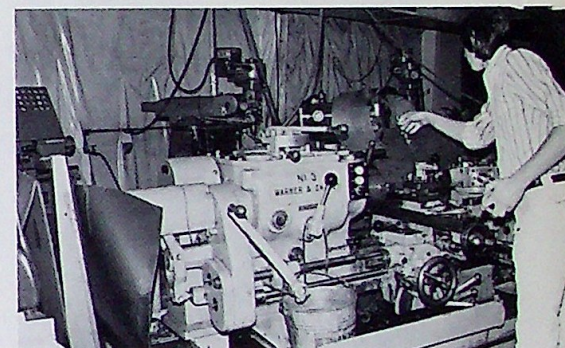
A central industrial area in the county is Ransdell Park, located in Lebanon. The park, comprised of 34 acres planned for commercial and industrial use, offers access to excellent transportation, and provides necessary utilities, zoning, hard surfaced streets and curbs, and city police and fire protection services.

Lots in Ransdell Park range in



size from 1.1 acres to 2.2 acres, with a combination of two or more sites possible.

The Boone County Chamber of Commerce works diligently with potential industries to help them move smoothly into the area.



SPANKY'S



PLACE

Recreation Vehicles for the Discriminating Buyer

BOATS - MOTORS - TRAILERS - MOTOR HOMES

- ★ STARCRAFT ★ MERCURY
- ★ GATOR
- ★ COBRA ★ SWISS COLONY
- ★ TITAN

Complete Sales and Service Facilities

SERVICE MANAGERS • Paul Shahan & Bill Large
SALES MANAGER • Gene Voorhies
OWNERS • Bill & Emily Wootan

LEBANON TRAILER SALES & SERVICE, INC.

1404 W. South St. (State Rd. 32)

PHONE 482-3220

Indianapolis line 873-3900

Stores and banks convenient

Central shopping areas with general and specialty merchandise are only minutes away when one lives in Boone County.

Consumers can go "Downtown on the Square" in Lebanon, where attractive retail stores border the historic Boone County courthouse.

On the far side of Lebanon is the modern Northfield Shopping Center, convenient to residential neighborhoods.

"Main Street" in Zionsville is the particular domain of the antique lover and the boutique browser. Unique shops and galleries along the old-fashioned brick street provide an array of exclusive items.

A newer retail area in Zionsville is "Boone Village" which also follows the colonial village motif of the community. Stores here feature both basic and specialty products.

Other central shopping areas include Thorntown's Main Street and centrally located districts in Dover, Whitestown, Jamestown, and Advance which have retained rural charm.

All Boone County merchants take pride in friendly, personal service and in complying with each



customer's requests.

The financial structure of Boone County includes four banks and two savings and loan associations, all housed in handsome buildings that enhance business areas.

The Boone County State Bank and the Citizens Bank and Trust Company have their headquarters in Lebanon, with county branches to meet all banking needs.

The long-established Farmer's State Bank operates in Zionsville with two offices.

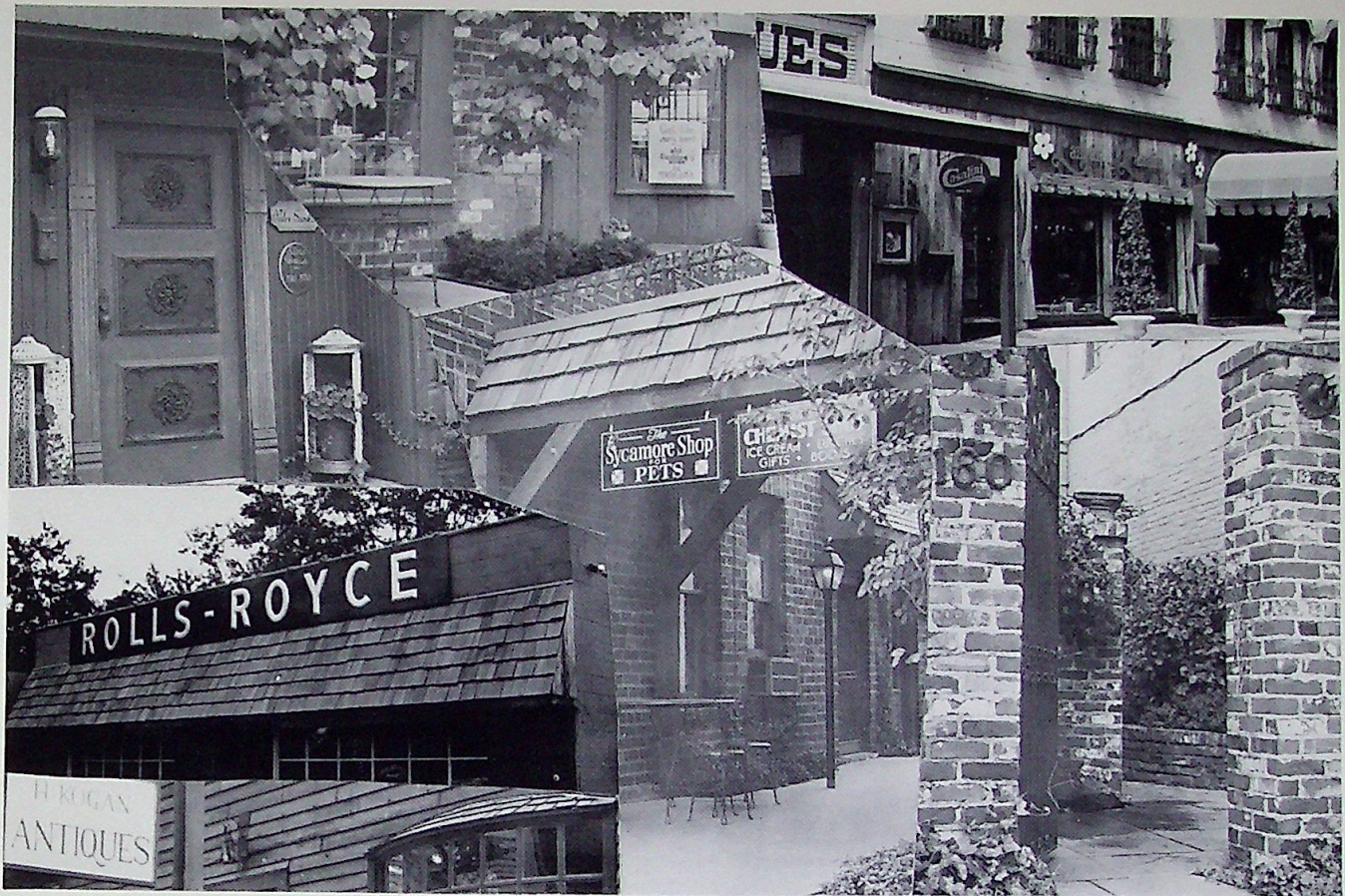




In Thorntown, the Home National Bank provides financial services for residents in the north-west part of the county.

Union Federal Savings and Loan Association maintains an office in Lebanon and one in Zionsville, while First Federal Savings and Loan in Zionsville is the most recent addition to the financial community.

Each of these institutions contributes to the stability of the county's business record.





A bright future

Boone County looks confidently to the future while cherishing the importance of its historical past.

Preservation of the best of the old and careful adoption of the best of the new will make Boone County a stable yet exciting place in which to work and live in the

last quarter of this century.

Led by the Boone County Chamber of Commerce, private citizens are working with plan commissions and professional planners to help determine the area's future.

Such groups are constantly evaluating community needs and re-

sources to meet present and coming demands for services and growth. Beautification and respect for the environment figure prominently in local studies and projects.

Master plans, designed for beneficial expansion, have been recently adopted on both city and county

levels so that specific guidelines are available when growth opportunities are presented.

With its excellent location, its many attractive features, and its friendly citizens, Boone County offers abundant future possibilities for quality urban and rural living.

The Boone County State Bank

LEBANON, INDIANA



Our Boone County area has a unique combination of city and rural living without the intrusion of urban problems.

We "Booneites" are a hardy group of people who have weathered the ups and downs of the past. Relying on our strong heritage, we are determined to maintain a healthy economic future.

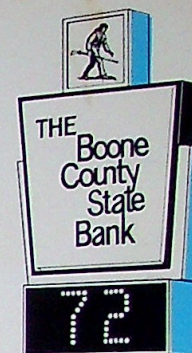
We, the officers and staff of the Boone County State Bank, are enthusiastically committed to using all our services and facilities to *further* ensure the success of our community, because as Boone County prospers, so will its financial institutions.

We are quite proud of our last five-year growth chart, which reflects the good results of our practice of pioneering new ideas and supporting community enterprises. Industrial, agricultural, and business segments of our economy have consequently shown a steady growth.

With this strong economic picture in mind, we at the Boone County State Bank and its branches are constantly working to assure that when our services and facilities are needed . . . they will be more than adequate.

CHAIRMAN OF THE BOARD AND PRESIDENT

MEMBER F.D.I.C.



*We have
provided these
branches
for your convenience*

- NORTHFIELD
- ADVANCE
- JAMESTOWN
- EAGLE VILLAGE

