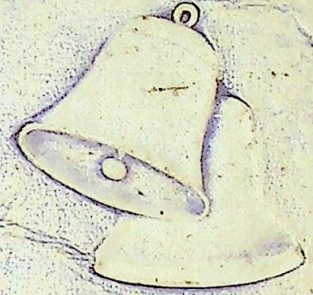
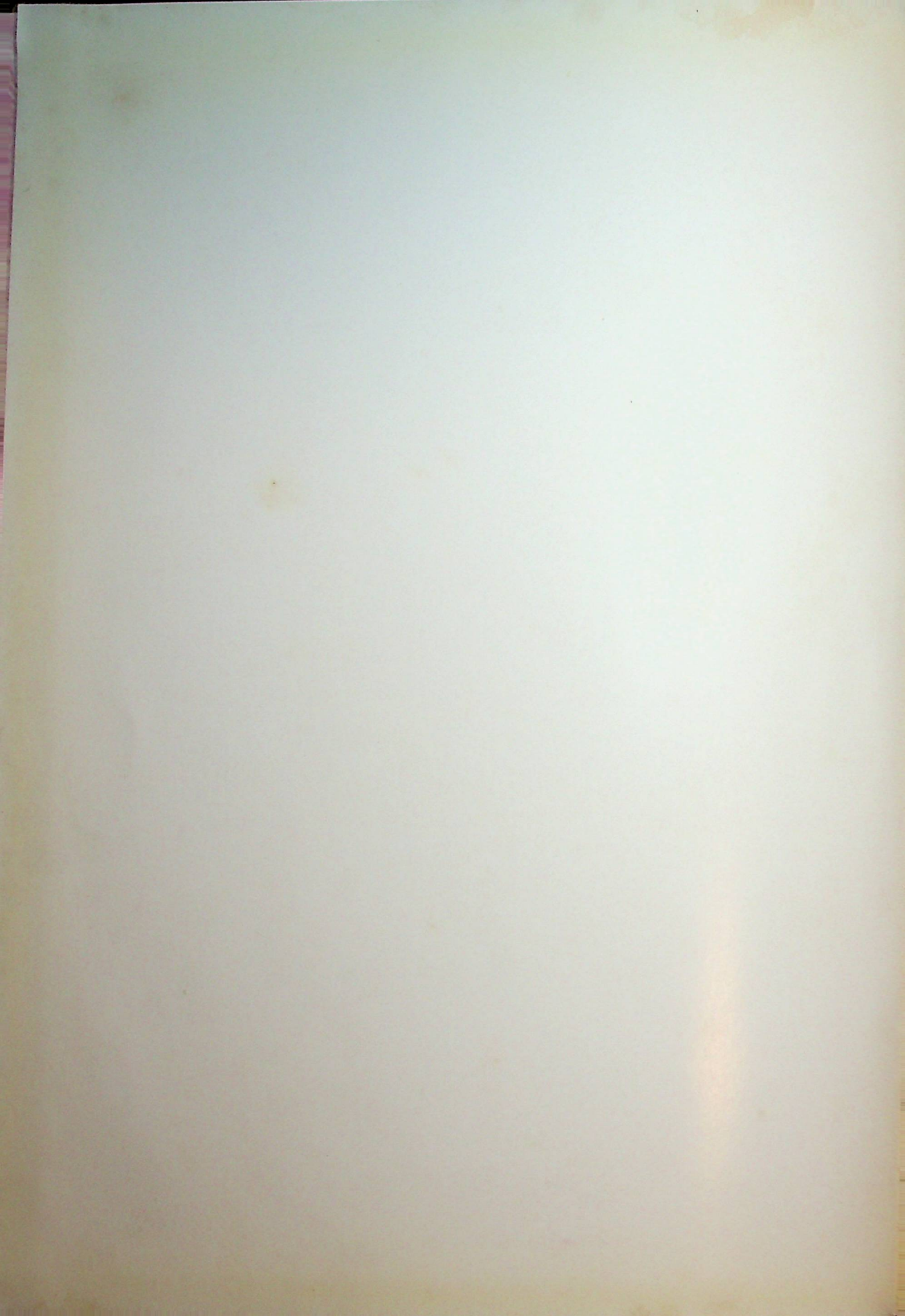


The



Centralian

1940



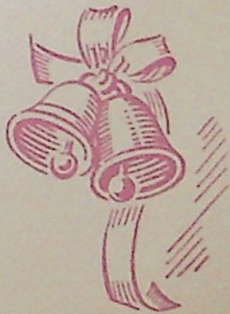
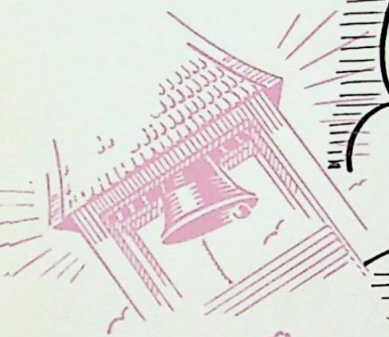
Presented to
Lebanon High School
with the Compliments
of Central Normal College
Virgil Hunt



HEAR YE!
-THE BELLS OF-
C.N.C.



CAMPBELL







"And we do mean up to our necks in work!"

MARGUERITE FRASER
Editor

DALE JACKSON
Business Mgr.

CENTRALIAN STAFF

Editor Marguerite Fraser
Business Manager Dale Jackson
Assistant Editor Laurence Wheatley
Assistant Business Mgr. Dorothy Thomas
Advertising Manager Samuel Eggers
Advertising Staff Alvin Beumer
Marion Edmondson
Maxine Edmondson
Anna M. Coffing
Idaperl Williams
Pictures James Christie
Paul Tucker
Leon Dalton
Ed Eikman
Sales Chairman Charles Newton
Art Wayne Campbell
Advisers Blanche M. Wean
Pres. Virgil Hunt

CONTENTS

Acknowledgments	109
Advertisements	100-107
Art Club	64
Athletics	71-81
Autographs	110-111
A.W.S.	62
Bells of C.N.C.	17
Bell Boy Contest	33-36
Blue Belle Contest	29-32
Boosters	69
Board of Trustees	11
Campus Crier	51
Cartoons	4, 50, 83, 91, 99
Commerce	48-49
Conclusion	108
Contents	7
Dedication	10
Drasceno	63
Faculty	14-16
Foreword	8
Freshman Class	43-45
Fraternities	92-98
Inauguration	13
Junior Class	38-40
Kappa Pi Beta	52-53
May Day	47
Music	56-59
N.Y.A.	68
Phy-Bi-Chems	65
President Hunt	12
Reveries	54
Senior Class	18-25
Sigma Phi Kappa Delta	26-27
Sororities	84-90
Snaps	28-37-46-55-60-70-82
Sophomore Class	41-42
S.C.A.	67
Staff	6
Student Council	61
W.A.A.	66

FOREWORD

WITHIN the covers of this book are found the reminders of boundless volumes of joys that we have shared in work and in leisure—boundless, because no book can contain all the memories and idiosyncrasies of one—much less of all of us. But here is remembrance enough to help us relive countless pleasures at countless times, and to keep glowing within your soul and mine that which has bound us together for achievement—the Spirit of C. N. C.



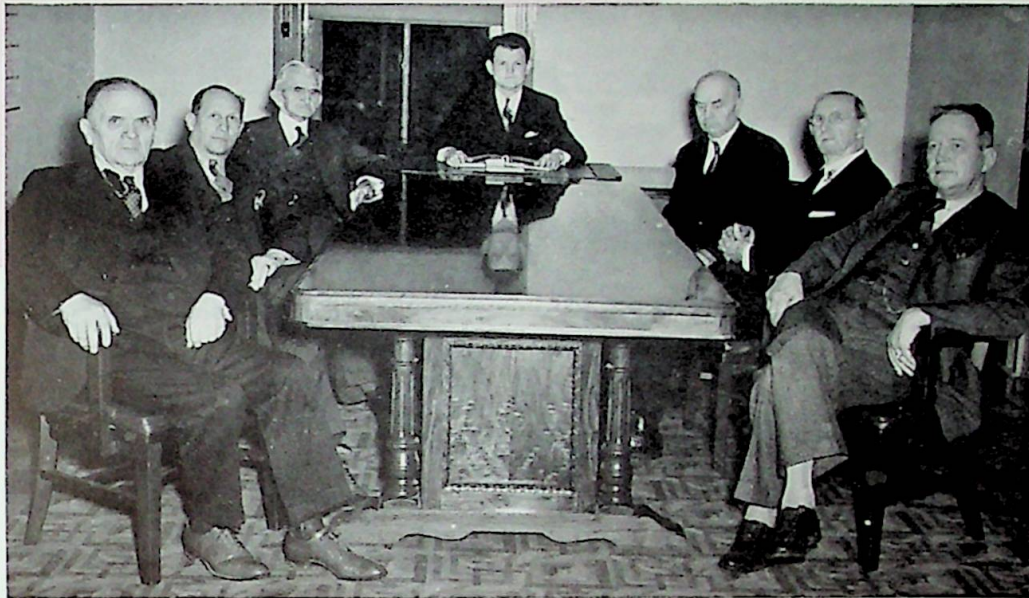
DEDICATION



"A LINK IS BROKEN"

IN the passing of John C. Taylor, December 30, 1939, following a short illness, Central Normal College lost a true counselor and friend for he had given twelve years of faithful service to the institution as one of its seven trustees. During that time many improvements were made in buildings and equipment for which Mr. Taylor was largely responsible. His balanced sense of values, his rugged honesty, and clever comments endeared him to friends and co-workers. With his lamented death, a link with Central Normal College is broken, which cannot be easily replaced.

BOARD OF TRUSTEES



OTIS E. GULLEY

C. W. GASTON

ROBERT H. KING

DR. W. T. LAWSON

ALLEN J. WILSON

FRANK ROBERTS

VIRGIL HUNT



PRES. HUNT

PRESIDENT Virgil Hunt came to Central Normal College in March 1937 as Head of the Science Department. In the fall of 1937 he was made Dean of Men and in the fall of 1938 he became Dean of Education. From July 1939 to January 1940 he was acting president and on January 27, 1940 he was inaugurated as President. President Hunt is one of the youngest college presidents in the United States.

Before he came to Central Normal, President Hunt held prominent positions in Galloway Academy and Junior College, Searcy Arkansas, and Pikeville College, Pikeville, Kentucky.



GLIMPSES OF THE SPEAKERS AND CROWD WHICH ATTENDED THE INAUGURATION OF MR. VIRGIL HUNT AS PRESIDENT OF CENTRAL NORMAL COLLEGE, JANUARY 27, 1940.

FACULTY



BLANCHE M. WEAN, B.S., M.A.
*Head of Business Education
Dept.*

MARY BARTON JOHNSON, A.B.
Instructor of Commerce



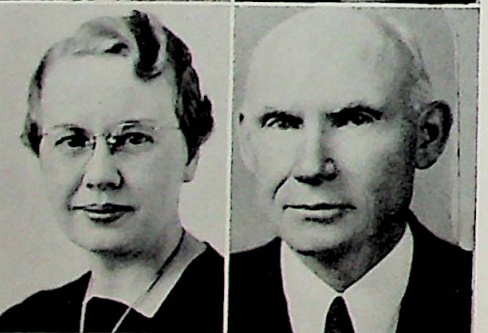
ANSEL WALLACE, M.S.
*Associate Professor of Com-
merce*

JAMES B. WILSON, A.B.
Head of Art Department



SEWELL LEITZMAN, B.S., M.S.
*Head of Department of Physi-
cal Education*

MARGARET E. WHITNEY, A.M.,
PH.D.
Instructor in Biology



NAOMI DALTON, M.D.
*College Physician
Professor of Physical Edu-
cation*

N. E. WINFREY, A.B., A.M.
*Head of Department of History
and Social Science*



EDWARD BARLOW EVANS, A.B., A.M.,
PH.D.
Head of English Department

C. R. BROTHERS, M.A.
Instructor of Science

FACULTY



MARJORIE D. GASTON, A.B., M.Mus.
Head of Department of Music

NORRIS S. PORTER, B.Mus.
*Assistant Professor of Music
and Physical Education*



J. I. SKIDMORE, A.B.
*Director of Band and Orchestra
Instructor of Music*

W. E. JOHNSON, A.B., A.M.
*Head of Foreign Language De-
partment*



E. V. KENNEDY, M.S.
*Instructor of English and Social
Science*

F. A. COTTON, PH.D.
Field Agent



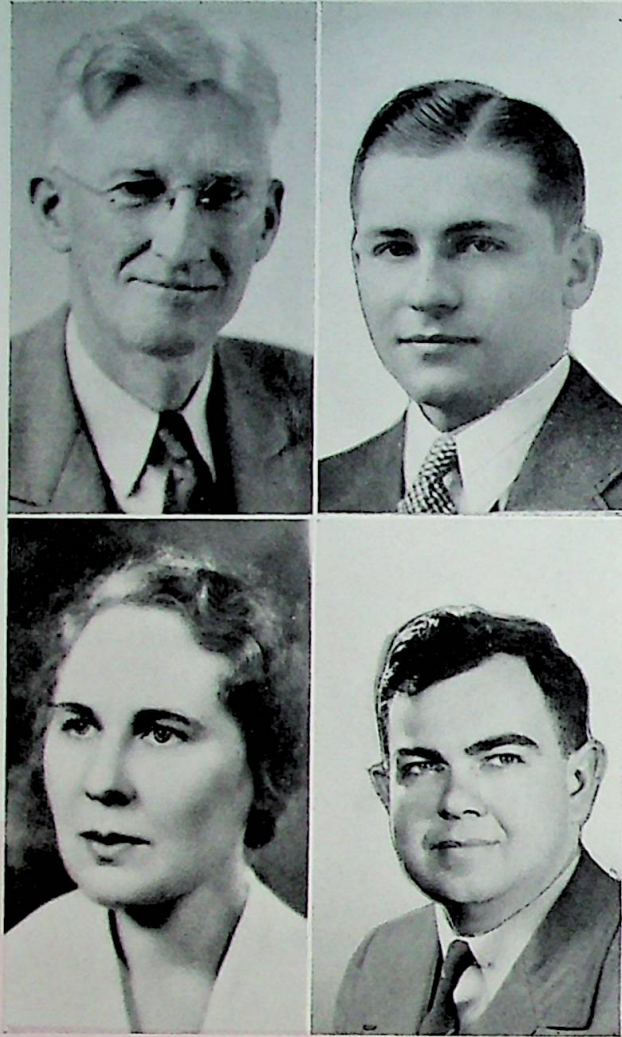
LORENE ORR, A.B.
*Librarian and Instructor in
Library Science*

NANCY BAIRD
Bookstore Attendant



FRED E. HADLEY
Supt. of Buildings

DAISY M. JONES, M.S.
*Supervisor of Student Teaching
Assistant Professor of Edu-
cation*



PLEASANT R. HIGHTOWER, A.B.,
A.M., Ph.D.
Head of Department of Education
Dean of Education

EDWARD EIKMAN, B.S.
Registrar
Secretary-Treasurer

BERTHA M. WATTS, A.B.
Dean of Women
Professor of English

ROBERT L. GREEN, A.B., M.A.
Dean of Men
Head of Mathematics

THE BELLS OF C. N. C.



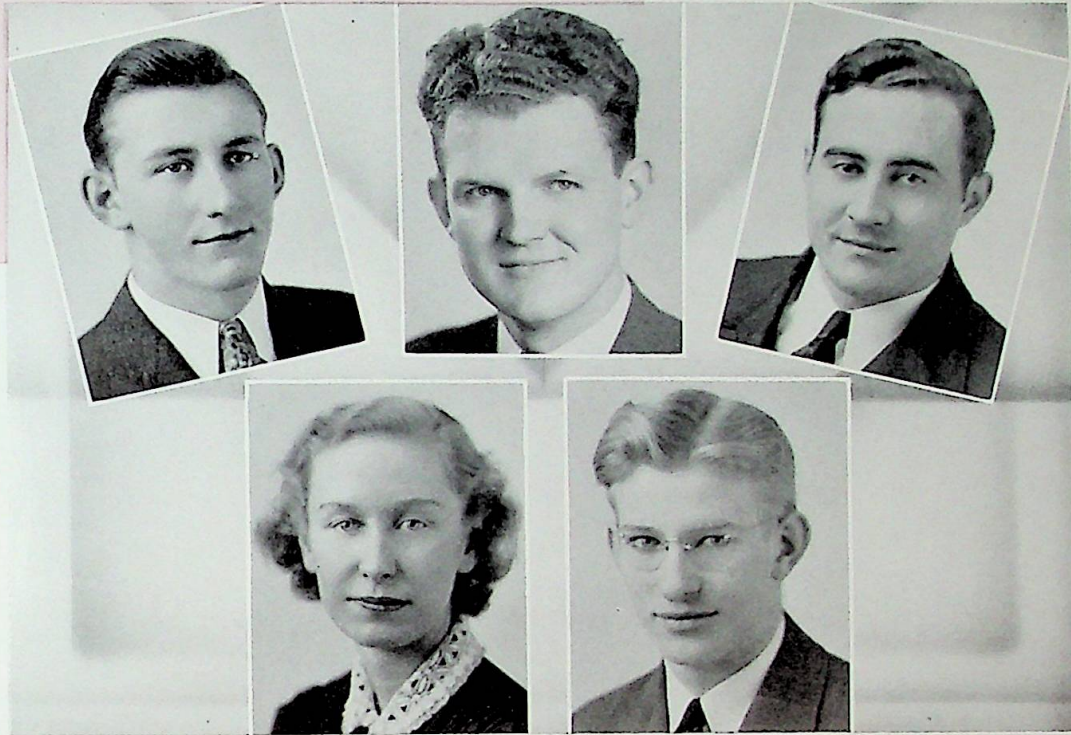
*I hear the bells of C.N.C.
They bring to me, sweet memories,
Sweet memories of yesterday
When we were classmates true.
School gave me some friendships true,
The best I ever knew;
I wonder if you hear those bells, old pal,
The bells of C. N. C.*

SENIORS

*"I wonder if you hear those bells, old pal,
The bells of C. N. C."*

NOW that we, the Seniors of 1940, are about to go upon the stage in this drama of life, those dear sweet bells bring back memories of the days of rehearsing, the days of work and play and getting ready to do our bit in our chosen profession. In spite of all we did our professors have succeeded in knocking off some of the corners and we appreciate much their efforts and their patience in bearing with us as we struggled through our various courses. In four short years they have changed us from awkward, bashful freshmen into young prospective teachers. During this time we have grown to love our school-mates. We do regret leaving them and will remember them always. As we leave we do not wish to say goodbye, but just "so-long" and may we meet often again in the future.

SENIOR OFFICERS



President

GERALD DOEDEN, B.S.

Attica, Physics, Chemistry, Physical Ed., Mathematics, Alpha Mu Kappa, Science Club President 1, Secretary-Treasurer 2, Sigma Phi Kappa Delta, Drasceno, President 2 & 4, Caltrigonian Circle, Student Council President 4, Debate, Senior Class President, Kappa Pi Beta, Who's Who, S. C. A. Cabinet, Vice-President Sophomore Class.

Vice-President

LEONARD REDDEN, B.S.

Corydon, English, Social Science, Biological Science, Science Club, Treasurer Y. M. C. A.

PRESIDENT VIRGIL HUNT

Sponsor

Secretary

JEANNETTE C. BELL, B.S.

Frankfort, Biology, Physical Ed., English, Kappa Pi Beta, Alpha Theta Epsilon, Senior Class Secretary, W. A. A. Secretary 4, Crier Staff, Booster Club.

Treasurer

LOWELL S. COATS, A.B.

Templeton, Music, English, Latin, Band President 4, Vice-President 3, Orchestra Vice-President 3, Alpha Mu Kappa Secretary 2, S. C. A. Cabinet, English Club President 3, Glee Club, Chorus President 3, Drasceno, Sigma Phi Kappa Delta.



MABEL AGNEW, A.B.

Westport, Latin, Commerce, Alpha Theta Epsilon.

EUNICE L. BEARD, A.B.

Greensburg, Latin, Commerce, English, Mathematics, Caltrigonian Circle, Delta Sigma Kappa, Drasceno.

ELSIE P. BENSON, B.S.

Talbot, Primary Grammar Grades, Rural School.

ALVIN BEUMER, B.S.

Holland, Commerce, Physical Education, Biological Science, English, Alpha Mu Kappa, Kappa Pi Beta, Drasceno, Campus Crier Staff.

EVELYN CAPLINGER, B.S.

Advance, Music, English, Glee Club, Orchestra, Psi Chi Omega.

JAMES L. CHRISTIE, B.S.

Danville, Four Year Elementary, Alpha Mu Kappa, Secretary 2, Treasurer 3, Boosters, Science Club, Kappa Pi Beta, Centralian Staff, Glee Club.

ANNA MAE COFFING, B.S.

Macy, Elementary, Delta Sigma Kappa, Drasceno, Art Club, Glee Club, Sigma Phi Kappa Delta.

FLOYD CRUM, B.S.

Frankfort, Boosters, Track, Sigma Lambda Pi, Math Club.

RUTH CAROLYN DAWSON, A.B.

Danville, Music, Art, Band Secretary 2, Orchestra Secretary 3, Girls Glee Club, Combined Glee Club, President 3, Psi Chi Omega, Historian 2, Girls Sextette, Treble Tone Trio, Violin Quartet, Two Piano Team, S.C.A. Cabinet, Vocal Ensemble, Sigma Phi Kappa Delta, Who's Who in American Colleges.

MARIAN R. EDMONDSON, B.S.

Clayton, Music, Art, English, Alpha Theta Epsilon, President 1, A.W.S. Advisory Board, Student Council, Who's Who in American Colleges, Art Club, Band, Orchestra, Glee Club, Music Accompanist, Kappa Pi Beta.



MAXINE EDMONDSON, B.S.

Clayton, Commerce, English, Physical Ed., Music, Kappa Pi Beta, Psi Chi Omega, Treasurer 1, Orchestra, Boosters, Treble Tone Trio, Glee Club, President 1, Campus Crier.

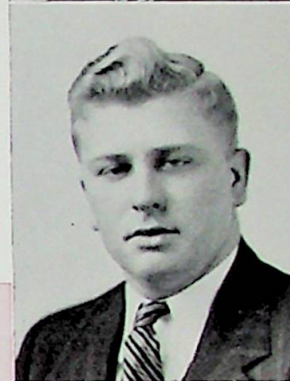


SAMUEL EGGERS, B.S.

Roachdale, Science, Commerce, Physical Ed., Alpha Mu Kappa, Secretary 1, President 1, Science Club, Commercial Contest, Centralian Staff.

RICHARD FALLS, B.S.

Glezen, Physical Ed., Biology, Social Studies, II, Mathematics, Co-captain of football team.



LOLA I. FARRELL, A.B.

Brookston, Commerce, Latin, English, Physical Ed., Delta Sigma Kappa, Vice-President 2, Kappa Pi Beta, English Club, Vice-President 1, Commercial Club.



VALERIE OPAL FENDER, B.S.

Bloomington, English, Physical Ed., Biology, Art, Art Club.

ERNEST FERGUSON, B.S.

Bargersville, Mathematics, Social Studies II, Physical Ed., Caltrigonian Circle.



MARGUERITE PEACE FRASER, B.S.

Lafayette, Commerce, English, Social Studies, Option I, Sigma Phi Kappa Delta, Kappa Pi Beta, English Club, Crier, Centralian Editor, Commercial Club, A.W.S. Advisory Board.

JOAN GRIFFEY, A.B.

Danville, Art, English, Latin, Psi Chi Omega, Art Club, Drasceno.



LOREN HARDAW, B.S.

Central, Physical Ed., Commerce, Sigma Lambda Pi, Commerce Contest Chairman.

MARGUERITE HARRISON, A.B.

Pittsboro, Commerce, Latin, English, Psi Chi Omega, Sigma Phi Kappa Delta, Secretary-Treasurer of Junior Class, Commercial Club, Kappa Pi Beta.

IONA EVANGELINE HERSHBERGER, A.B.

Kingman, English, Latin, Social Studies,
II, Alpha Theta Epsilon, Drasceno.

ESTHER B. HYATT, B.S.

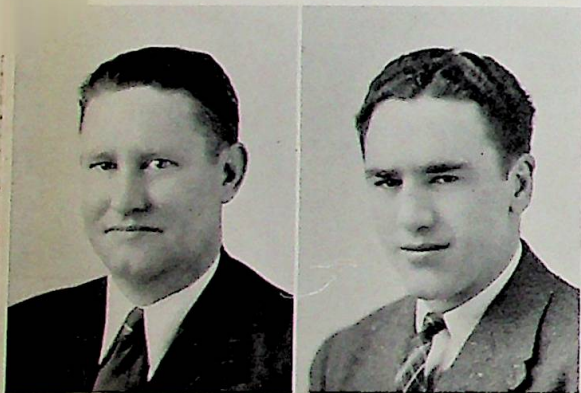
Hillsboro, Primary.

SPENCER DALE JACKSON, B.S.

Owensburg, Commerce, Physical Ed.,
Mathematics, Biological Science, Editor
of Campus Crier, Business Mgr. of Cen-
tralian, Commercial Club President, Kap-
pa Pi Beta, Alpha Mu Kappa.

VIRGINIA BELLE KEENEY, A.B.

Danville, Music, Commerce, Girls Glee
Club, Vice-President 3, Combined Chorus,
Band, Orchestra, Girls Sextette, Two-
Piano Team, Violin Quartet, Treble Tone
Trio, Student Christian Association, Presi-
dent, Sigma Phi Kappa Delta, Who's Who
in American Colleges, Psi Chi Omega,
Treasurer 1.



FLOYD KENNEDY, B.S.

Scottsburg, History, English.

JACK KENNEDY, B.S.

Linton, Commerce, Physical Ed., Social
Studies, Option II, Co-captain football
team, President Zeta Sigma Fraternity.

LUCILE IRWIN KNIGHT, B.S.

Morgantown, Elementary, Primary, Art
Club.

PAULA FAYE KNIGHT, B.S.

Morgantown, Music, Art, Elementary, Al-
pha Theta Epsilon, Art Club, Glee Club.

GALE LAWLER, B.S.

Thorntown, English, Commerce, Physical
Ed., History, S.C.A. Cabinet, Band, Or-
chestra.

AMANDA LEAK, B.S.

Lizton, Mathematics, English, Psi Chi
Omega, Sigma Phi Kappa Delta, Kappa
Pi Beta, Band, Chorus, Crier.





MARY LOUISE MCFERRAN, A.B.

Bainbridge, English, Latin, Commerce,
Physical Ed., Alpha Theta Epsilon, Crier.

BOYD MCINTOSH, B.S.

Osgood, English, Commerce.



ERNEST MAUCK, B.S.

Corydon, Physical Ed., Social Studies I,
Commerce, Alpha Mu Kappa.

EUNICE MEEKS, A.B.

Danville, English, Latin, Music, Psi Chi
Omega, S.C.A. Vice President 4, Y.W.C.A.
President 3, Drasceno, Glee Club, N.Y.A.
Secretary 2, 3, 4, A.W.S. Freshman
Orientation Co-Chairman 4.

AUSTIN MYERS, A.B.

Danville, Mathematics, Commerce, Physi-
cal & Biological Science, Chemistry,
Science Club, Math Club, Drasceno, N.Y.
A. Play Cast, Alpha Mu Kappa, Band,
Orchestra.

CHARLES B. NEWTON, B.S.

Gentryville, Commerce, English, Physical
Education, Social Studies II, Alpha Mu
Kappa, Vice-President 4, Science Club,
Drasceno, Vice-President 3, 4, English
Club, Who's Who in American Colleges,
Sigma Phi Kappa Delta, Debate, S.C.A.
Cabinet, S.C.A. Associate President 3,
Junior Class President, Sophomore Class
Secretary, Freshman Basketball.

EDNA O'BRIAN, B.S.

Odon, Music, English.

PAUL PARKER, B.S.

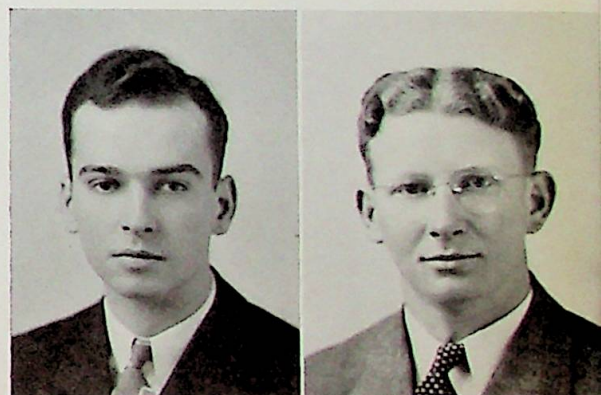
New Richmond, Commerce, Physical Ed.,
Social Studies, Zeta Sigma, Secretary 4.

VALENTINE PLEASANT, A.B.

Danville, Mathematics. Delta Sigma,
Treasurer, 1, Assistant Sponsor, 4.

ESTHER PRATT, B.S.

Jamestown, Elementary.



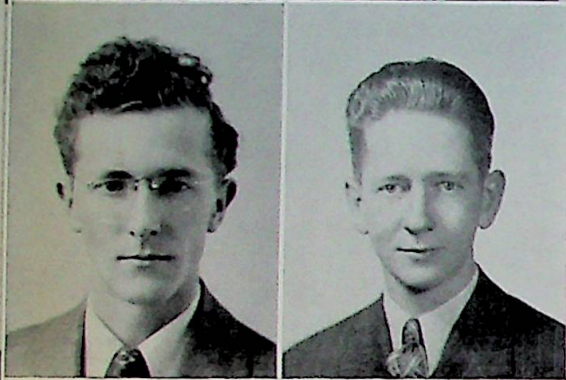


MILDRED RECORD, B.S.

Danville, Pre-medic, W.A.A. Delta Sigma Kappa, Science Club.

EVERETT REDDEN, A.B.

Corydon, Latin, Mathematics, Physical Education, Math Club.



WREX REED, B.S.

Winslow, Commerce, English.

PHILIP HARLOW SHAW, B.S.

Danville, Music, English, Commerce, Sigma Phi Kappa Delta, Mens' Glee Club, Mixed Chorus, Men's Quartet, Who's Who in American Colleges, S.C.A., Alpha Mu Kappa, Band, Orchestra, Student Council.

MARY LOU SMITH, A.B.

Ladoga, English, Latin, History, Science, II, Psi Chi Omega, Band, Drasceno, Kappa Pi Beta, Boosters, Girls Glee Club, Vice-President.

VIVIAN F. SMITH, B.S.

Danville, Elementary.

LEE ROY STOCKTON, B.S.

Otterbein, Commerce, Biology, Physical Ed., Social Studies II, Alpha Mu Kappa, Band.

MARY MAXINE THARP, B.S.

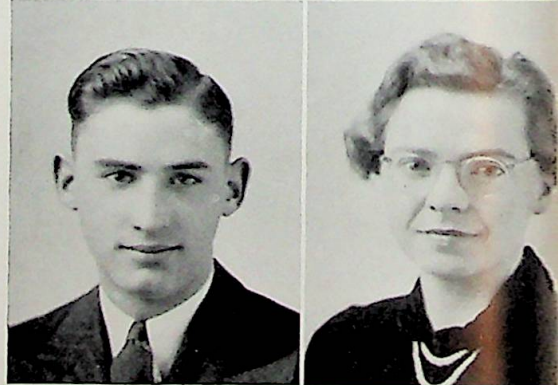
Danville, Music, Art, English, Band, Orchestra, Glee Club, Violin Quartet, Treble-Tone Trio, Girls' Vocal Sextet, Vocal Ensemble, Psi Chi Omega, Sigma Phi Kappa Delta.

PAUL TUCKER, B.S.

Eckerty, Commerce, Math, Science.

RUTH WADE, B.S.

Danville, Commerce, Physical Ed., Music, Art, Psi Chi Omega, Glee Club, Band, Orchestra, Kappa Pi Beta.



IDAPERL WILLIAMS, B.S.

Pendleton, Commerce, Physical Ed., Art,
Psi Chi Omega, Kappa Pi Beta, W.A.A.
Boosters, Band 1, Orchestra 1, Secretary
to Coach.



HELEN WRIGHT, B.S.

Owensville, Physical Ed., Biological
Science.



SENIORS (Continued)

- | | |
|--------------------------|----------------------------------|
| George A. Barnes, A.B. | Noble K. Littell, B.S. |
| Juanita E. Bledsoe, B.S. | Homer McAfee, B.S. |
| Thomas Bowers, B.S. | Walter P. McArtor, B.S. |
| Robert Wayne Bray, B.S. | George I. McClelland, B.S. |
| Harold Brinegar, B.S. | Kenneth G. Marshall, B.S. |
| Carol Stuart Brown, B.S. | Ralph Mauck, B.S. |
| Beulah Bryant, B.S. | Ruth I. Wine Mendenhall,
B.S. |
| Floyd Burroughs, B.S. | Norman W. Michel, B.S. |
| Leonard Burton, B.S. | Harry K. Miller, B.S. |
| Homer R. Caughell, B.S. | Dorothy Mitchell, B.S. |
| Ruby Chambers, B.S. | Lester Mosteller, B.S. |
| Omer L. Cole, B.S. | Oral Glenn Neier, B.S. |
| James L. Cox, B.S. | Robert Norris, B.S. |
| James W. Craig, B.S. | Lowell Oliver, B.S. |
| Lilian G. Dieter, B.S. | Martha J. Peden, B.S. |
| Kenneth K. Edwards, B.S. | Wharton Reynolds, B.S. |
| James R. Eller, A.B. | Paul Roush, A.B. |
| Willie M. Eller, B.S. | Mary Alice Sample, B.S. |
| Floyd H. Fancher, B.S. | Russell Schermer, B.S. |
| Herman R. Franklin, B.S. | Hilda I. Short, B.S. |
| Mildred Gibbs, B.S. | Gerald E. Shroyer, B.S. |
| Oral Wayne Gregg, B.S. | Hortense Smith, B.S. |
| Bertha Gregory, B.S. | Lome F. Smith, B.S. |
| Gerald O. Haffner, B.S. | Ralph H. Smith, B.S. |
| Kenneth T. Hall, B.S. | William Spray, B.S. |
| Dee Hand, B.S. | Simpson V. Stephenson,
B.S. |
| Edward G. Henning, B.S. | Thelma Thompson, B.S. |
| Helen Huston, B.S. | Durwood Vaughan, B.S. |
| Elda Johnson, B.S. | Millard T. Vaughan, B.S. |
| Marie M. Johnson, B.S. | Margaret E. Wainwright,
B.S. |
| Rolland M. Johnson, B.S. | Barbara Ward, A.B. |
| Gladys Jones, B.S. | Cleo M. Whitaker, B.S. |
| Mossie Judd, B.S. | Mary I. Wilson, B.S. |
| Madge Kessinger, B.S. | Dorothy Witmer, B.S. |
| Phyllis C. Kinman, B.S. | Carl Zimmerman, B.S. |
| Irwin Knight, B.S. | |
| Faye Knight, B.S. | |
| Otto C. Kopp, B.S. | |

SIGMA PHI KAPPA DELTA

HONORARY SCHOLASTIC FRATERNITY

SIGMA Phi Kappa Delta was founded at Central Normal College during the summer of 1932 with 15 charter members: Dr. Waldo Wood, Mrs. Adeline Wood, Carl E. Wilson, Fred Lemley, L. N. Blue, C. R. Landis, Geoffrey Carmichael, C. R. Maxam, Claude Lawler, A. A. McClannahan, Harry Hays, Leslie I. Steinbach, Blanche M. Wean, Dr. George H. Reibold, Dr. Walter H. Mohr.

The purpose of this organization is to recognize outstanding scholarship, capacity for research, ability in leadership and willingness to serve.

During the life of this organization 276 persons have been honored by becoming members. Honorary members who have been initiated are: O. W. Gulley, John C. Taylor, Glen Hovermale, Curtis W. Roll, Connor D. Ross, Grover Van Duyn, Sylvan A. Yager, John W. Laird, J. Malcolm Dunn, H. M. Whisler, Floyd I. McMurray, Birch E. Bayh, Charles S. Foster, W. T. Lawson, Gerald Alexander, Dr. E. M. Dill, John W. Cravens, F. R. Henshaw, Etta C. Hogate, Roy E. Jones, Mrs. C. H. Griffey, Dr. F. A. Cotton, Mrs. Kate Huron Gilbert, Honorable Elmer Thomas, Mrs. Jennie Ralston, Mrs. Nell Millikan Stevens, Mr. W. S. Sanford.

The Seniors who were elected in January 1940 were: Charles Newton, Marguerite Fraser, Lowell Coats, Anna Mae Coffing, Ruth Carolyn Dawson, Gerald Doeden, Maxine Tharp, Virginia Belle Keeney, Philip Shaw, Marguerite Harrison, Eunice Meeks.

Officers of the year were: President, Edward Eikman; Vice-President, Daisy Jones; Secretary-Treasurer, Blanche M. Wean. National officers are: President, Dr. Walter H. Mohr; Secretary, Geoffrey Carmichael.

SIGMA PHI KAPPA DELTA

LOWELL COATS

ANNA M. COFFING

RUTH C. DAWSON

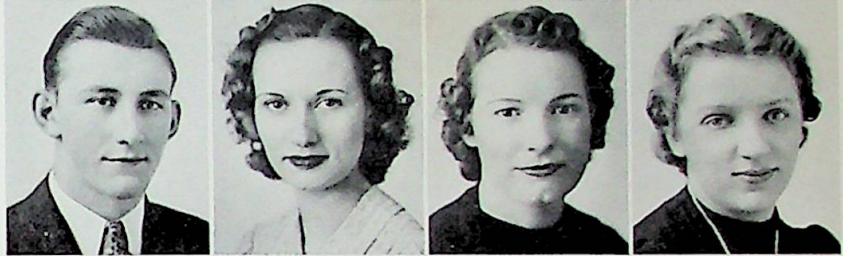


GERALD DOEDEN

MARGUERITE FRASER

MARGUERITE HARRISON

VIRGINIA B. KEENEY



EUNICE MEEKS

CHARLES NEWTON

PHILIP SHAW

MAXINE THARP

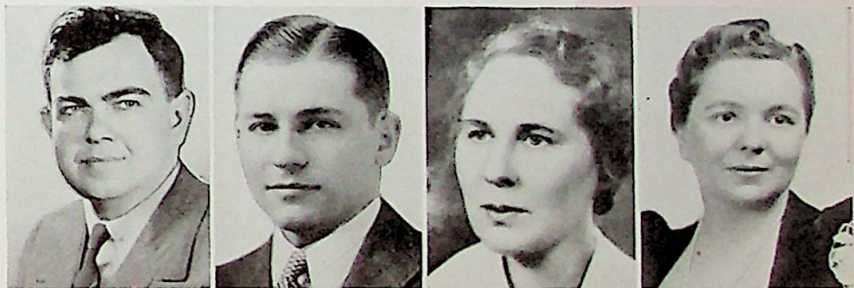


ROBERT L. GREEN

EDWARD EIKMAN

BERTHA M. WATTS

MARJORIE D. GASTON



DAISY M. JONES

VIRGIL HUNT

NORRIS PORTER

MARY B. JOHNSON



JAMES WILSON

BLANCHE M. WEAN

N. E. WINFREY

MARGARET WHITNEY



SENIOR SNAPS



BLUE BELLES

of 1940

by

**RICHARD
GREENE**





FIRST



**MARGIE
LITTLE**



SECOND



**EUNICE
MEEKS**

BLUE BELLE NOMINEES



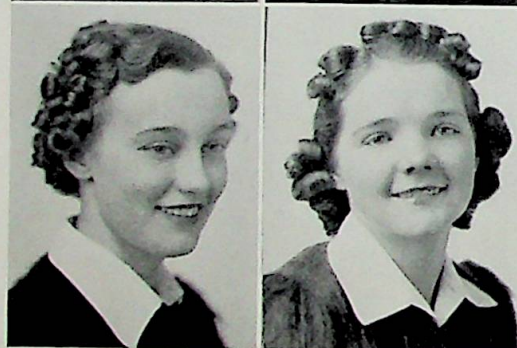
MARGARET BOOTS

RUTH CAROLYN DAWSON



BETTY CURRY

JOAN GRIFFEY



BETTY LOU COOPER

HELEN PARKER



HELEN JONES

PEGGY McCOUN

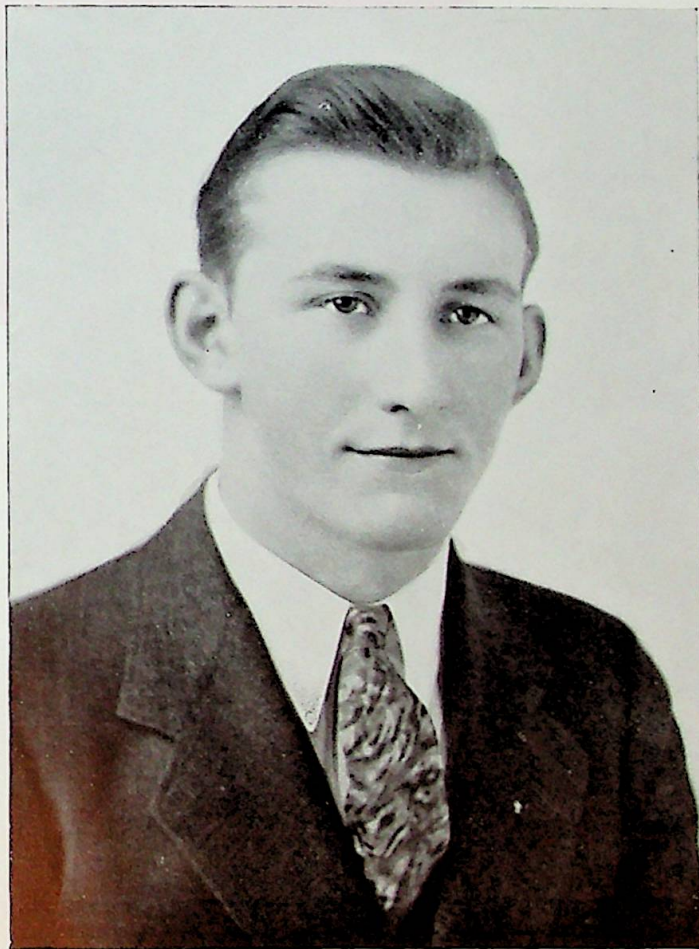
BELL BOYS

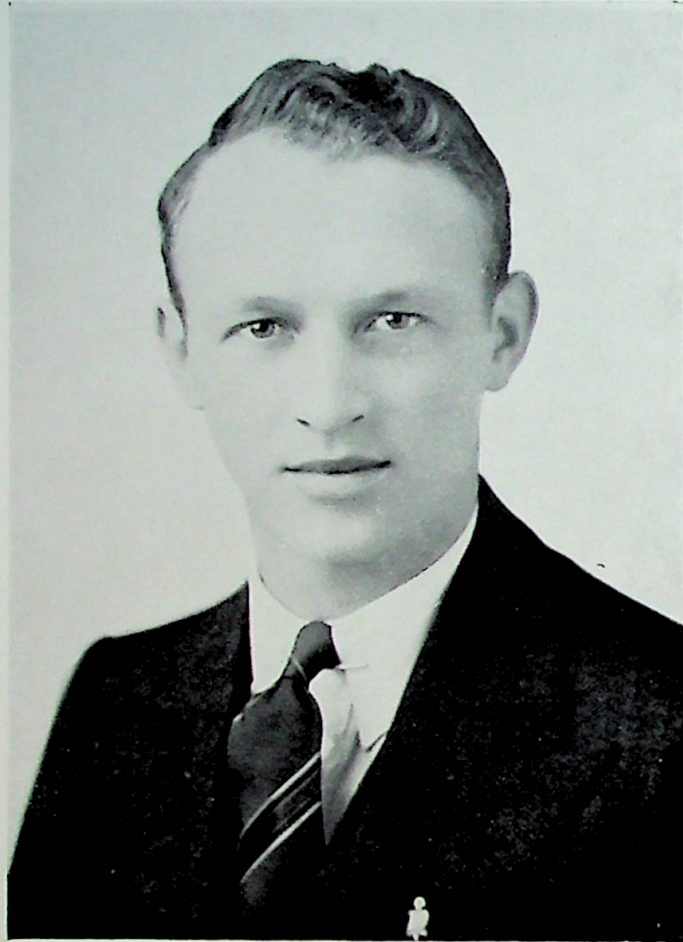
“REPRESENTATIVE MEN”

of 1940

FIRST

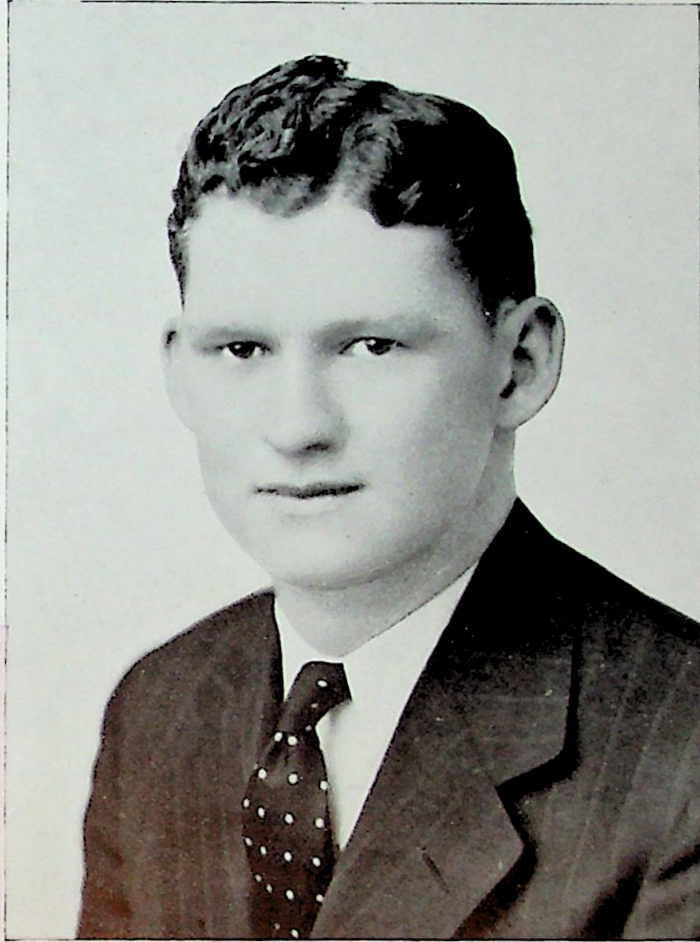
**Gerald
Doeden**





SECOND

DALE JACKSON



THIRD

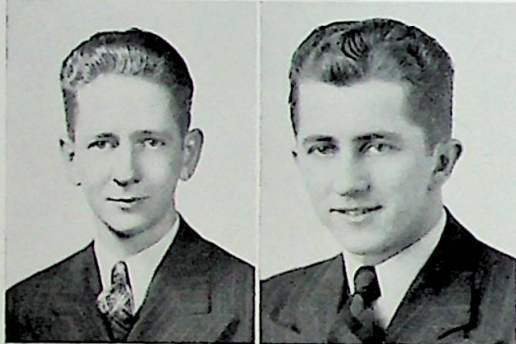
**THOMAS
JANEWAY**

BELL BOYS RUNNERS UP



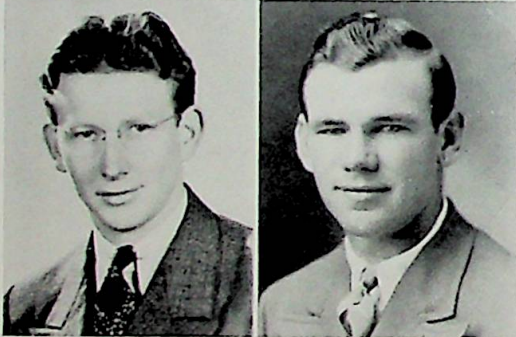
EARL SNIDER
Shelbyville

FLOYD CRUM
Frankfort



PHILIP SHAW
Danville

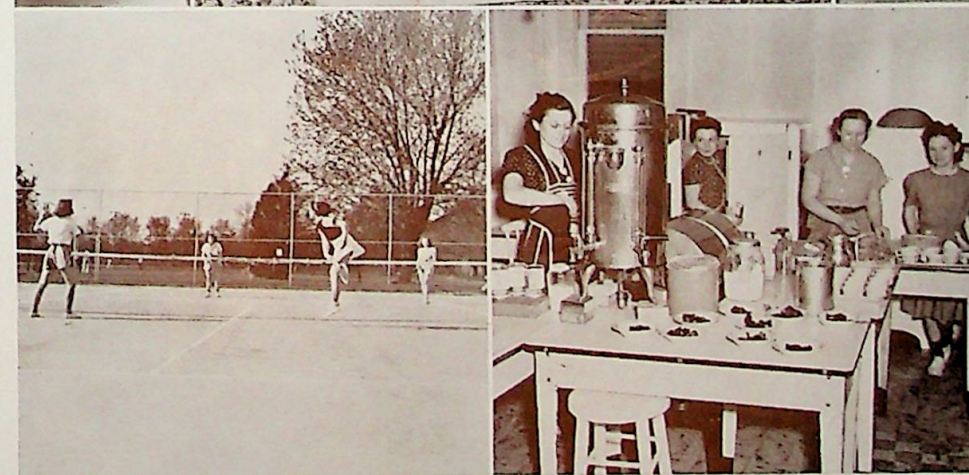
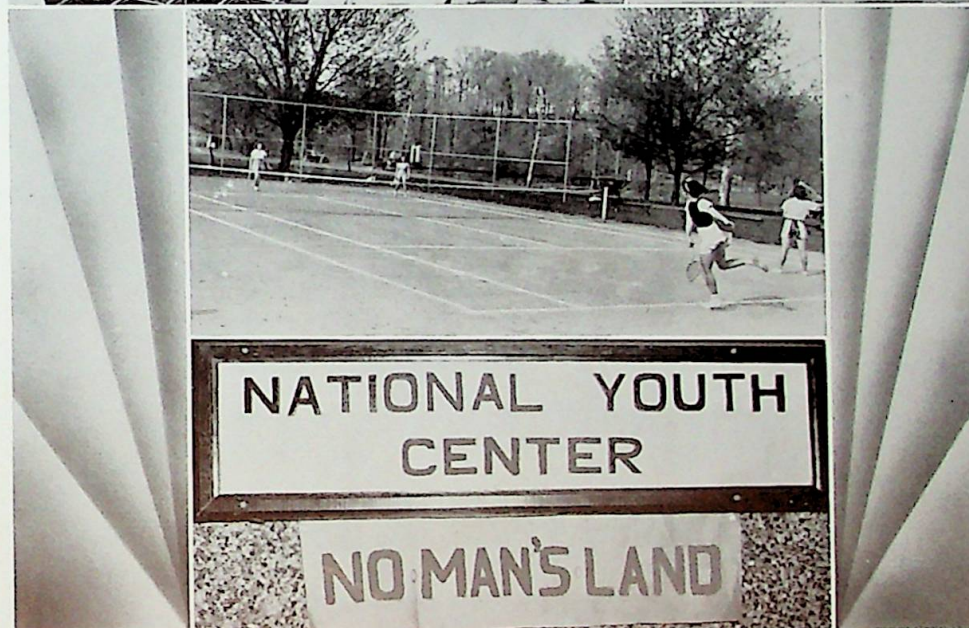
LAURENCE WHEATLEY
Kempton



CHARLES NEWTON
Gentryville

EVERETT YOUNGER
Bedford

N. Y. A. SNAPS



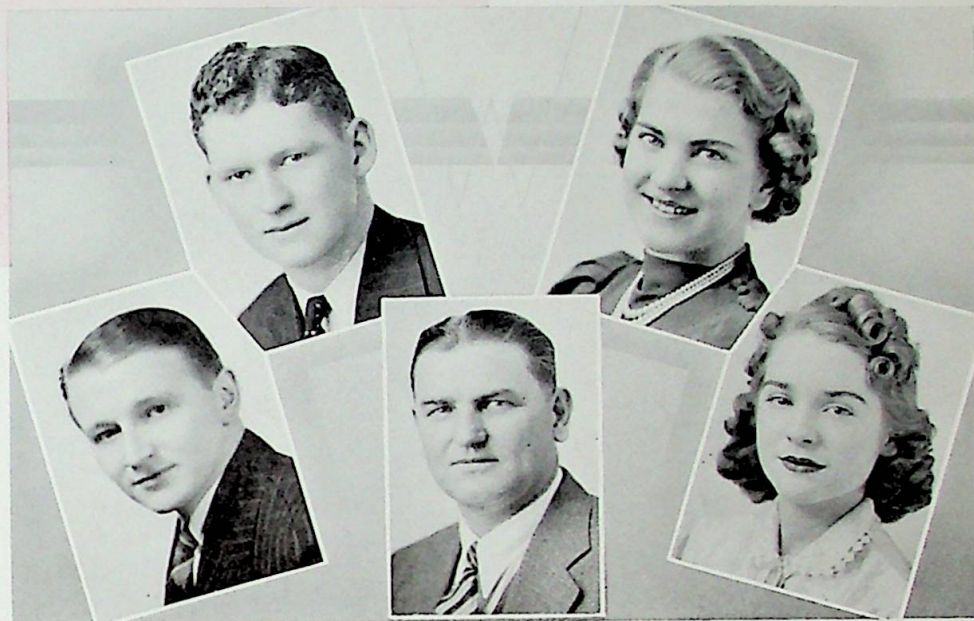
JUNIORS

IN the fall of 1937 a group of bewildered Freshmen, wearing that proverbial "green expression", arrived on the Central Normal College campus in search of that illusive "higher education".

In the spring of 1939 some of the members of the original group were lost. They marched proudly in the group comprising the last of Two Year Graduates. There have been several additions to the class since that first registration which have helped to fill the vacancies made by the graduates.

During the past three years many new experiences have been encountered and dealt with successfully. These years have gone swiftly and the class now faces the last year. It is the desire of the whole class that this last year will add the finishing touch to the achievement of their goal.

JUNIOR OFFICERS



THOMAS JANEWAY
President

RUTH TERRY HESS
Vice-President

RICHARD HELTON
Secretary

PEGGY McCOUN
Treasurer

MR. LEITZMAN
Sponsor



HENRY ETTA ALLEE

MARY M. BODENHAMER

DORIS BOTTORFF

ANNE CHRISTIE

ROY CLEAVER

ERNEST CRANE

NELDA EISENMENGER

MORRIS ETTER

ROBERT GIBBS

JAY HARRISON

MARY A. HUSTON

MARGARET MARTIN

RAYMOND NICHOLAS

FAYE NICHOLAS

AMELIA PENROD

HAZEL ROUTIER

EARL SNIDER

ALBERTA THOMAS

DOROTHY THOMAS

MELVIN TROUTMAN

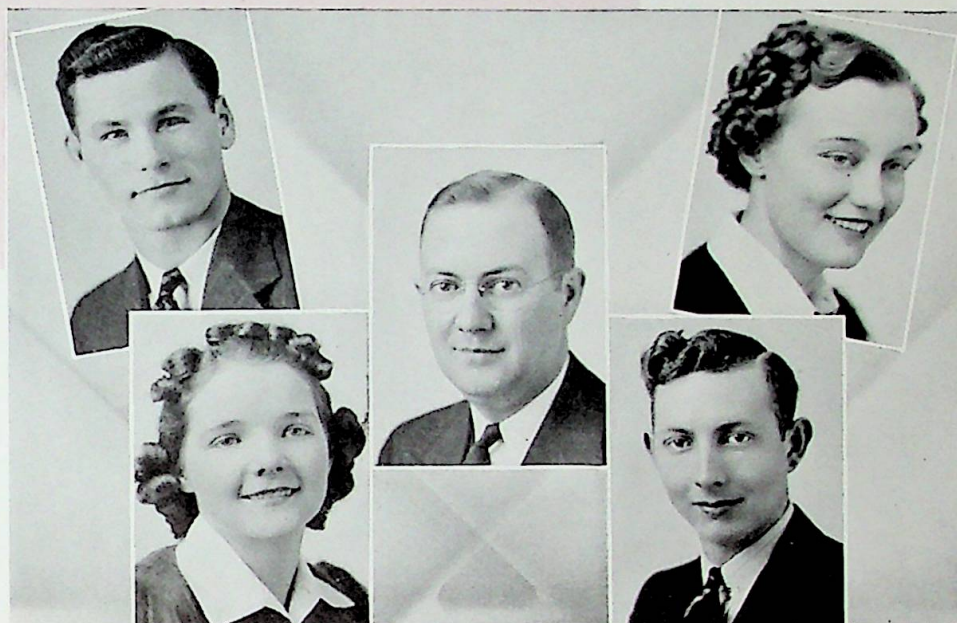
DANIEL WAYMIRE

LAURENCE WHEATLEY

KATHLEEN WILLIAMS



SOPHOMORE OFFICERS



NORMAN BELL
President

BETTY LOU COOPER
Vice-President

MR. WALLACE
Sponsor

HELEN PARKER
Secretary

EARL CRISLER
Treasurer



LOUIS AIKMAN
 DOROTHY AMICK
 ALICE AMY
 CHARLOTTE ANDERSON

HOWARD BAILEY
 NONA BAYS
 LOIS BEAM
 MAX E. BELL

BERTHA CHRISTIE
 BETTY COX
 DONNA COX
 LEON DALTON

PAUL DEICH
 KENNETH DICKERSON
 EUDORA ELLIS
 JOE FOX

MARY JO FULTON
 KENNETH GRIGGS
 CHEZ HAEHL
 FLORENCE HIGGINS
 ELLENA HUGHES

WALTER JACKSON
 GORDON JAY
 CATHERINE JONES
 RUBY KEARNS
 GLEN MCINTOSH

HARRIETT MILLING
 INEZ MONNINGER
 ELWOOD MOUNTS
 MARY E. MYERS
 MEREDITH PAYNE

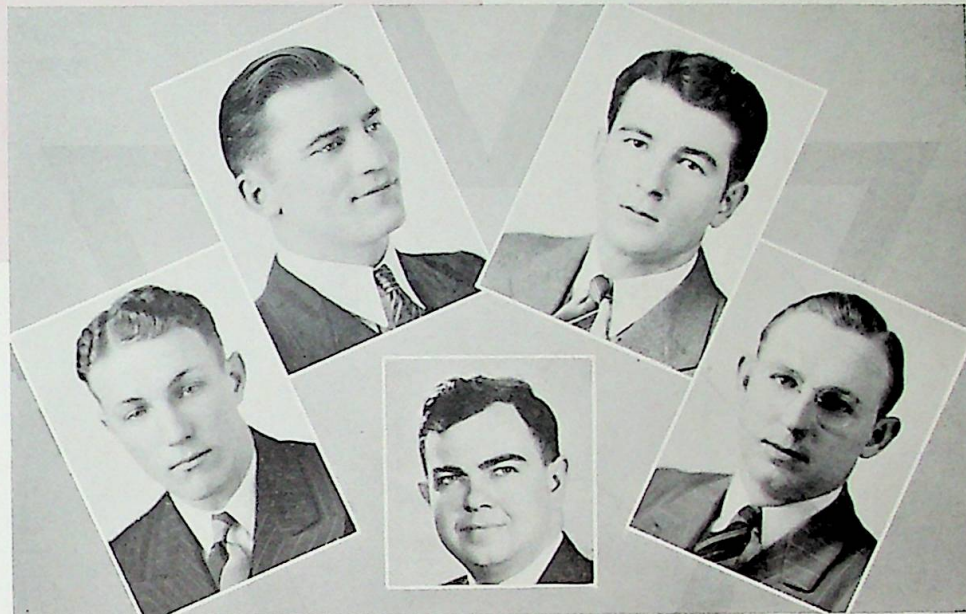
MARY PIERPONT
 WILLIAM RATLIFF
 ROBERT SHANK
 IRENE SMITH
 MARY STEINMAN

WARREN THOMAS
 GEORGE VARGA
 ROBERTA WALTER
 BRUCE WEST
 VIOLA WILLIAMSON



For

FRESHMEN OFFICERS



STEVE TOMALA
President

NORRIS JACKSON
Vice-President

HAROLD GARWOOD
Secretary

ROBERT JAY
Treasurer

DEAN GREEN
Sponsor



MARIAN ARMSTRONG
 KATHRYN ARNOLD
 THELMA BARNES
 KENDALL BONSETT

MARGARET BOOTS
 LEONA BOYLE
 NAOMI CARLIN
 ELIZABETH CARTER

THAD CRAMER
 BETTY CURRY
 LORRAINE DEER
 MARIE DETMER

EARL DINEMORE
 BETTY DOVE
 NELDA EISENMENGER
 BILLIE FALLS

MILDRED GRIGGS
 CHARLES GROSS
 HERMAN HALLBERG

CAROL HARRISON
 CECIL HAVENS
 REBECCA HENDRICKS
 JOHN HERSHBERGER

HELEN HOPP
 RUBY HUFF
 MARY HUNT
 GOLDA JACKSON

ROBERT JAY
 DON JONES
 GEORGIA JONES
 HELEN JONES

KENNETH KEEN
 ROBERT KING
 LAURA LARSON
 MARY LAWRENCE



MAXINE LETSINGER
 MARGIE LITTLE
 LENORE McCAMMACK
 ROSAMOND McHOLLAND



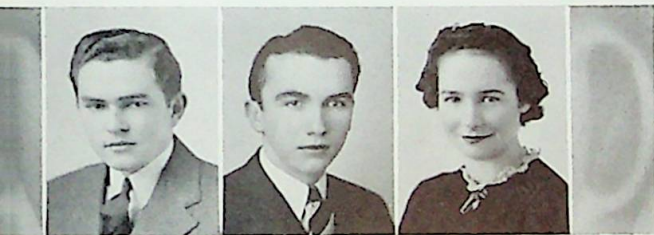
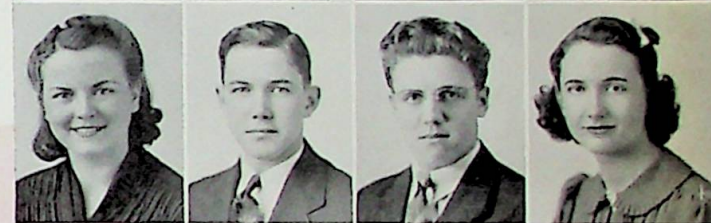
EVELYNNE McClAIN
 NELLIE McVAY
 JANICE MALLORY
 LEON MARTIN



ERMA MILAM
 IOLA MOORE
 ELEANOR MILLER
 IVAN MOUNTS



BETTY MYERS
 EDWIN NAPIER
 WALTER NAY
 CAROL NELSON



LOWELL NELSON
 RUSSELL NORTHAM
 MAXINE PRESSER



MARTHA RUDOLPH
 LESLIE SAYERS
 MAGGIE LEE SMITH
 IRENE SWANSON



GREGG TATMAN
 KELSO VANCE
 MARIE WARD
 PHYLLIS WATSON



MARY F. WHEATLEY
 JOHN WHITENACK
 LAWRENCE, WEITKAMP
 MARGARET WETZEL



OPAL WILLIAMSON
 JAMES WISEHART
 EVELYN WORKMAN
 EDWIN ZARSE

SNAPS



MAY DAY



MAY QUEEN AND HER COURT

Maxine Edmondson, Eunice Meeks, Marian Edmondson, Mary Lou Smith, Queen Ruth Carolyn Dawson, Diane Cason, Virginia B. Keeney, Joan Griffey, Ruth Wade.

CAST OF "A MIDSUMMER NIGHT'S DREAM"

This play was sponsored by Drasceno and coached by Mrs. Flora S. Evans.

COMMERCE



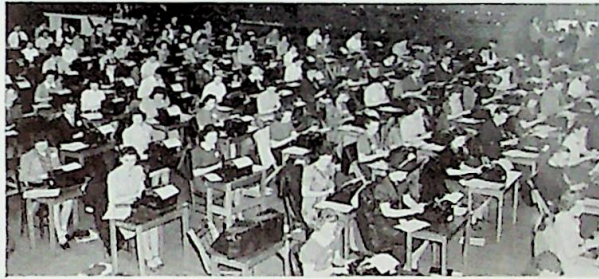
BLANCHE M. WEAN MARY B. JOHNSON ANSEL WALLACE
Head of Department Instructor Associate Professor

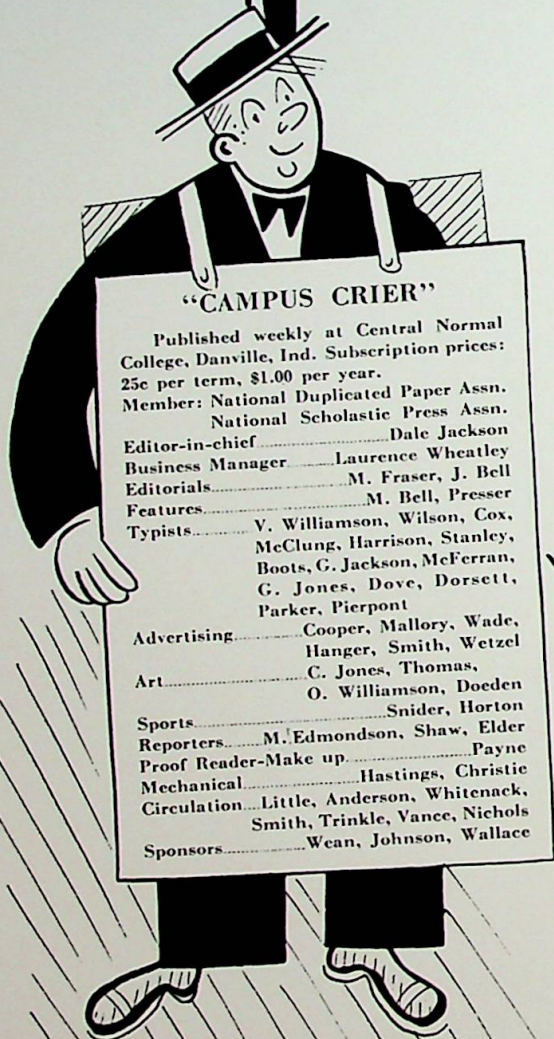
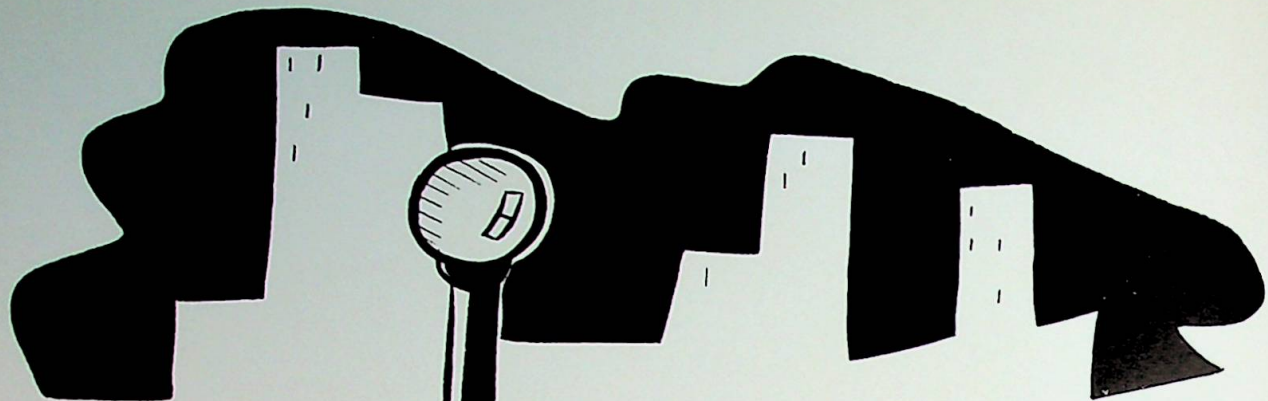
OVER one-half of the students at Central Normal College were enrolled in the Commerce Department which is organized with three definite aims: first, the instruction of students for stenographic and clerical work and accountants who take either the one-year or two-year business course; second, the instruction of students in preparation for commercial teaching; third, sponsoring of such activities as are beneficial to the students and to the business field in this community.

At the opening of this year's work, this department was extended to include three rooms on the second floor of Recitation Hall. Mr. Ansel Wallace and Mrs. Lois Buford were added to the staff. New classes were opened in income taxes, social security, and cost accounting, with Business English and commercial arithmetic taught in this department.

Extracurricular activities of this department include: first, mailing of quarterlies; second, college publicity program; third, National Duplicated Paper Association which acts as a center for the duplicated school papers of schools all over the United States and America; fourth, a course in duplicated journalism; fifth, commercial contest—the 1940 contest was the largest in the history of this event; over 1500 high school students were registered in the different events—sixth, Student Accounting System. Laurence Wheatley was the Accountant for 1939-40. The seventh activity was the alumni file. During the past two years all the alumni names have been assembled in one file which is kept in the publicity office. An attempt is made to keep a record of as many alumni as possible. Several times during the year news letters and announcements have been sent to the alumni through this department. The pictures of the classes from 1926 to 1935 were placed on the walls of the commerce office and publicity department.

SNAPS





"CAMPUS CRIER"

Published weekly at Central Normal College, Danville, Ind. Subscription prices: 25c per term, \$1.00 per year.

Member: National Duplicated Paper Assn. National Scholastic Press Assn.

Editor-in-chief.....	Dale Jackson
Business Manager.....	Laurence Wheatley
Editorials.....	M. Fraser, J. Bell
Features.....	M. Bell, Presser
Typists.....	V. Williamson, Wilson, Cox, McClung, Harrison, Stanley, Boots, G. Jackson, McFerran, G. Jones, Dove, Dorsett, Parker, Pierpont
Advertising.....	Cooper, Mallory, Wade, Hanger, Smith, Wetzel
Art.....	C. Jones, Thomas, O. Williamson, Doeden
Sports.....	Snider, Horton
Reporters.....	M. Edmondson, Shaw, Elder
Proof Reader-Make up.....	Payne
Mechanical.....	Hastings, Christie
Circulation.....	Little, Anderson, Whitenack, Smith, Trinkle, Vance, Nichols
Sponsors.....	Wean, Johnson, Wallace



**CAMPUS
CRIER**

CAMPBELL →

CAMPUS CRIER



1. Wheatley and Jackson make up the dummies.
2. Williamson, Parker, Farrell, Jackson and Dove cutting stencils.



3. The one and only way to a Kappa Pi Beta pin.
4. Another reason to start work on the Crier at 6:00.



5. Thomas, Doeden, Jones, and Williamson do a little art work.
6. Hastings and Christie operate the mimeograph.



7. The faithful few who stay to assemble the paper.
8. The Editor finally takes a peek at the paper.

KAPPA PI BETA

KAPPA Pi Beta has had a very successful year during which time three new junior chapters were formed at Bridgeton, Indiana, Avon High School, Danville, Indiana, and Marquette Institute, Chicago, Illinois.

This organization was founded at Central Normal College during the summer of 1932 with twelve charter members. Members are elected from those students who have worked at least fifteen weeks as members of the Campus Crier staff.

The aims of the fraternity are:

1. To further the publication of the school newspaper.
2. To recognize ability of students who are outstanding in service.
3. To further the best interests of Central Normal College.
4. To promote an interest in journalism and assist aspiring journalists.
5. To promote the interests of duplicated papers everywhere.

The badge of the fraternity is a scroll superimposed with the letters KPB and bears the inkwell and quill.

The winners of Honor Awards made at the Razz Banquet were:

DALE JACKSON
MARGUERITE FRASER

The officers of the year were: President, Margaret Martin; Vice-president, Harriet Milling; Treasurer, Meredith Payne; Secretary, Peggy McCoun; Keeper of Archives, Dorothy Thomas; National Organizer, Marguerite Fraser.

KAPPA PI BETA

Margaret Martin
President

Dorothy Thomas
Keeper of Archives

Meredith Payne
Treasurer

Peggy McCoun
Secretary

Marguerite Fraser
National Organizer



Charlotte Anderson

Jeanette Bell

Max Bell

Alvin Beumer

Margaret Boots

Doris Bottorff



James Christie

Betty Cooper

Betty Cox

Donna Cox

Betty Dove

Marian Edmondson



Maxine Edmondson

Lola Farrell

Marguerite Harrison

Ruth Terry Hess

Dale Jackson

Catherine Jones



Georgia Jones

Margie Little

Janice Mallory

Harriett Milling

Faye Nicholas

Paul Parker



Helen Parker

Mary Pierpont

Maxine Presser

Hazel Routier

Earl Snider

Maggie Lee Smith



Mary Lou Smith

Alberta Thomas

Kelso Vance

Ruth Wade

Roberta Walter

Margaret Wetzel



Laurence Wheatley

Idaperl Williams

Opal Williamson

Viola Williamson

Earl Crisler

Gerald Doeden



REVERIES OF 1939 - 1940

Sept. 11—Registration—Refer to Front Fly Leaf.
 Sept. 30—Homecoming Game with Earlham and Dance.
 Oct. 1—Friends from Home Day.
 Nov. 10—Kappa Pi Beta Banquet.
 Nov. 11—N.D.P.A. Conference.
 Nov. 22-27—Thanksgiving Vacation (We observed the first one).
 Dec. 22-Jan. 2—Christmas Vacation.
 Jan. 27—Mr. Virgil Hunt became the president of our school and one of the youngest in the country. Homecoming Game and Dance.
 Sometime in February—Six seniors, Charles Newton, Gerald Doeden, Philip Shaw, Marian Edmondson, Virginia Belle Keeney, and Ruth Carolyn Dawson, were honored by being elected to Who's Who in American Colleges and Universities.
 Mar. 8-18—Spring Vacation. Wore our overcoats.
 April 6—Annual Commercial Contest. New Albany walked away with it.
 April 29—Many new students arrived for mid-spring term.
 May 1—Crowning of the May Queen, R. C. Dawson, Mother and Daughter Banquet and "A Midsummer Night's Dream"—all very nice but are still wearing overcoats.
 May 13—"A Waltz Dream" was presented—the first operetta ever to be given at C.N.C.

Mixed in were the Sigma Phi Kappa Delta and Razz Banquets, good and (?) convocations, Mixers, Organization Dances, weiner roasts, band contests, basketball, football, baseball, track—and oh yes, the Senior Faculty Basketball Game. And don't let anybody kid you—the 1940 Seniors definitely defeated the Faculty—even though the faculty played a rough and tough game.

This is the end of the reveries—now we look forward to Senior Week with the play, "Mrs. Temple's Telegram," Music Recital, Baccalaureate, Commencement (refer to back fly leaf) and Alumni Banquet. So long, until homecoming next year.



N.Y.A. Girls

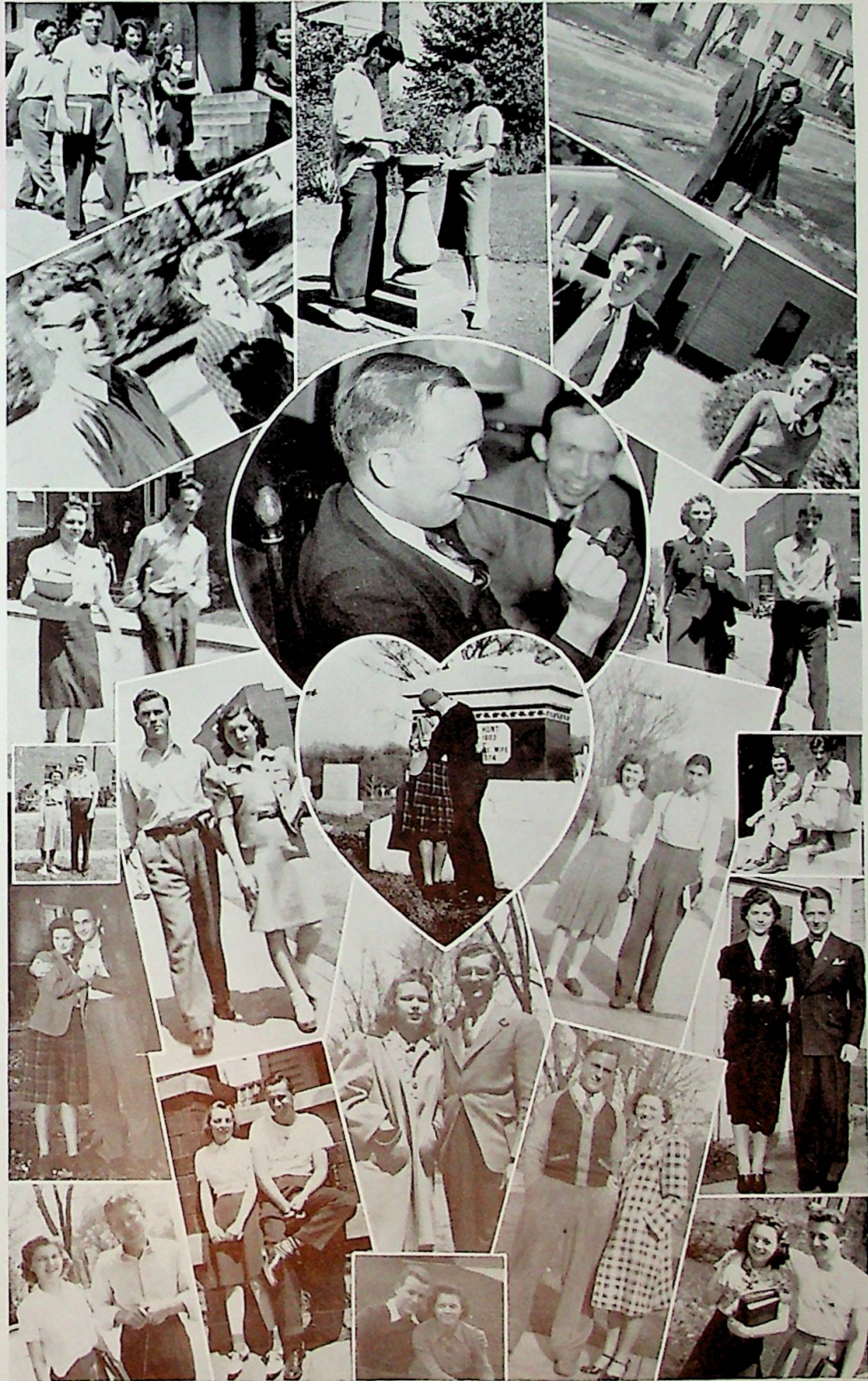
Who's Who

January Class of
Sigma Phi Kappa
Delta



Contest Chairmen and
Co-Chairmen

LOVERS



MUSIC



THERE are more music seniors graduating from the department than have been graduated in many years. The different organizations in the Music Department have had a very busy season. The Band and Orchestra under the direction of Mr. James I. Skidmore have furnished many fine programs and well deserve the new purple trousers which complete a very attractive uniform. The Girls' Glee Club, Men's Glee Club, and College Chorus, directed by Miss Marjorie D. Gaston, have furnished several programs both for the College and the community.

The Treble Tone Trio composed of Virginia Belle Keeney, Maxine Edmondson, and Mary Maxine Tharp, accompanied by Ruth Carolyn Dawson, like the boys of the Cornet Trio of last year, will be greatly missed after this year. Other organizations are the C.N.C. Girls' Sextette, composed of Marie Ward, Ruth Terry Hess, Kathleen Williams, Virginia Belle Keeney, Mary Maxine Tharp, and Erma Milam, accompanied by Ruth Carolyn Dawson; the C.N.C. Men's Quartet, composed of John Long, Philip Shaw, Harry Norman, and Owen Nay, accompanied by Marian Edmondson; the Vocal Ensemble composed of the Girls' Sextette, the Men's Quartet, and the other Men's Quartet composed of John Lingeman, Lowell Coats, Cecil Havens, and Wendell Mann, accompanied by Ruth Carolyn Dawson. New organizations are the Trombone Duo with Cecil Havens and Glenn King, accompanied by Marian Edmondson, the Clarinet Quartet with Wendell Mann, Betty Cooper, Margie Little, and Carol Harrison, and a soloist on Xylophone, Chez Haehl, with Marian Edmondson as accompanist.

A few of the most outstanding events of the department were the broadcast from W.C.K.Y. in Covington, Kentucky; the Band trip to the northern part of the state with concerts at Rochester, Napanee, Kendallville, Pleasant Lake, and a broadcast over WOWO in Fort Wayne; an evening's concert at Plainfield; and the Christmas and Easter Cantatas.

The department is now working on a Musical Comedy, "A Waltz Dream", by Herbert Strauss to be presented in the College Chapel on May 13. The final work of the year will be preparing music for Baccalaureate, the Music Recital, which will be given by the seniors of the department assisted by the orchestra, and Commencement.

BAND AND ORCHESTRA



MUSICAL GROUPS

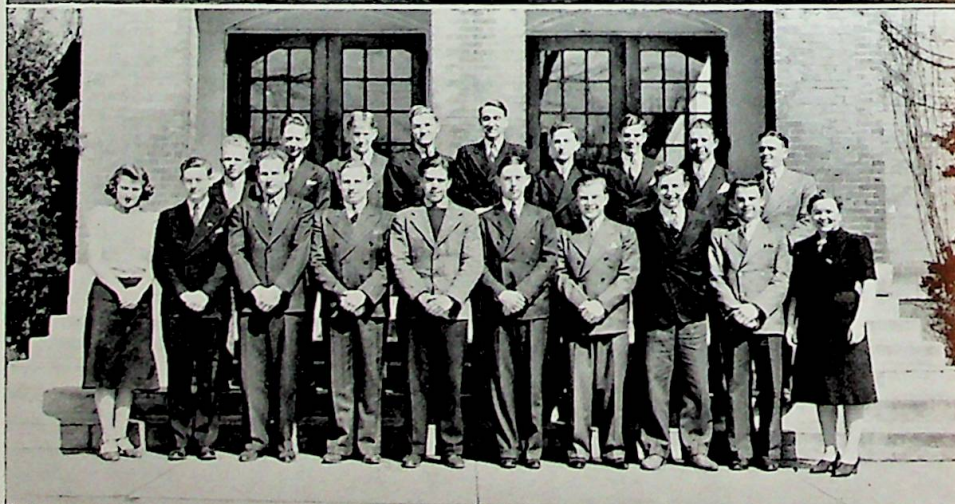
GLEE CLUB
Composed of
Men's Chorus
and
Girls' Chorus
Miss Gaston, Director



GIRLS' SEXTETTE
Ruth Carolyn Dawson
Marie Ward
Ruth Terry Hess
Kathleen Williams
Virginia Belle Keeney
Mary Maxine Tharp
Erma Millan



MEN'S CHORUS
Miss Gaston, Director
Marian Edmondson,
Accompanist



MUSIC GROUPS

VIOLIN TRIO: R. Dawson, M. Edmondson, V. Keeney, M. Tharp.

CLARINET QUARTET: W. Mann, B. Cooper, C. Harrison, M. Little.

TROMBONE DUET: M. Edmondson, C. Havens, G. King.

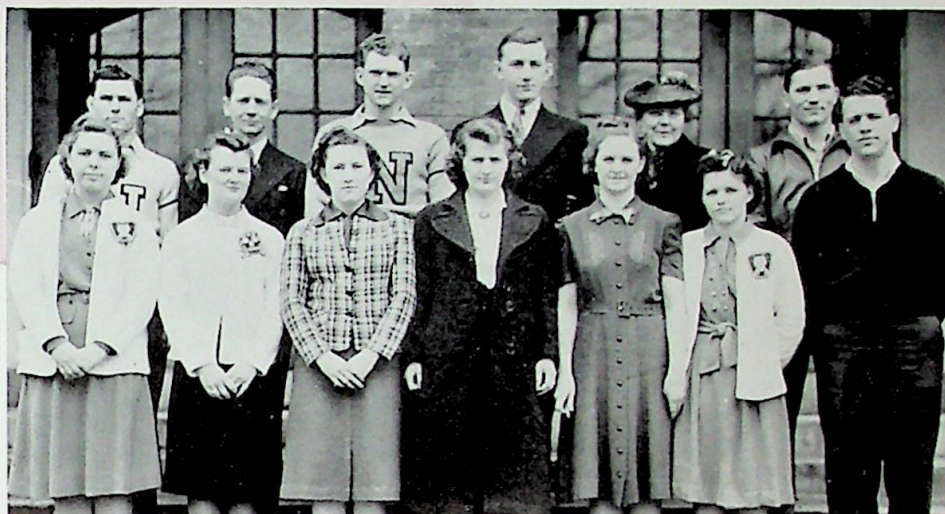
MENS' QUARTETS: J. Long, P. Shaw, H. Norman, W. Ney. M. Edmondson, J. Lingeman, L. Coats, G. King, W. Mann.



SNAPS



STUDENT COUNCIL



FRONT ROW:

M. Martin, B. Cox, M. Huston, M. Edmondson, L. Deer, M. Smith, J. Wisehart.

BACK ROW:

N. Bell, P. Shaw, T. Janeway, G. Doeden, Miss Watts, S. Tomala.

THE Student Council of Central Normal College was organized November 8, 1939.

Its membership is composed of four Seniors, four Juniors, three Sophomores, and three Freshmen who are chosen by their respective classes.

The purposes are:

1. To promote and correlate wholesome student activities.
2. To present student opinion to the president and faculty.
3. To foster practices and relationships which both fulfill the purposes of the College and call forth the loyal support of the students.

The Student Council holds regular meetings on the first Monday of each month at which problems are discussed and recommendations for faculty action made.

A. W. S.



FRONT ROW:

Mrs. Wean, Mrs. Porter, Miss Watts, Mrs. Wilson, Mrs. Johnson, Mrs. Jones.

SECOND ROW:

Miss Gaston, M. Edmondson, C. Anderson, V. Keeney, K. Williams, V. Williamson, M. Huston, M. Fraser, F. Nicholas.

DURING the present school year the Association of Women Students has sponsored many constructive campus activities. Counselors for the orientation of freshmen girls assisted the Dean of Women in many ways. The series of meetings and parties was culminated by the Freshman Rose Tea through which the new women students expressed their appreciation of the help given them by the faculty and upperclass women.

Among the worthwhile programs brought to the campus by the Association were the lectures of Mrs. Freeda Robinson, auditorium director at Block's, Mrs. Jeanette Nolan, Indianapolis author and lecturer, and Dr. Thurman B. Rice, chairman of the Indiana State Board of Health. The Association sponsored classes in Personality Development and Instruction on Marriage and the Home.

Perhaps the most important project now being planned is one in combination with the Student Council for the landscaping of the ravine east of the gymnasium.

The Tri Kappa "Dean's Award" which was given to Central Normal College in the fall of 1939 has been used up to this time in assisting nine women students with a good balance remaining for the assistance of others as it is needed.

DRASCENO

CLUB



FRONT ROW:

L. Wheatley, M. McCoun, M. Smith, D. Thomas, M. Armstrong, I. Hershberger, B. Cooper, M. Rudolph, A. Amy, M. Edmondson, D. Hastings.

SECOND ROW:

N. King, F. Higgins, N. McVay, E. Meeks, E. Beard, D. Bottorff, I. Monninger, E. McClain, K. Williams, A. Coffing, C. Haehl.

THIRD ROW:

W. Metsker, L. Coats, G. Doeden, K. Vance, C. Newton, K. Dickerson.

IN the fall of 1938 a group of students, realizing the need of an organization that would promote intelligent interest in drama and provide opportunities of dramatic expression, organized the Drasceno Club. During this same year they successfully produced the three-act mystery-drama, "The Night of January 16."

This year they have produced two one-act plays, one of which, "Mrs. O'Leary's Cow", was presented at convocation on January 30. On May 1 the Club, with the cooperation of the Music, Physical Education and Science Departments, sponsored the production of "A Midsummer Night's Dream". The director of the play was the sponsor of the Club, Mrs. Flora Schaefer Evans.

The officers of the Club are: President, Gerald Doeden; Vice-president, Charles Newton; Secretary, Kathleen Williams; Treasurer, Chez Haehl; Sponsor, Mrs. Flora Schaefer Evans.

ART CLUB



FRONT ROW:

L. Knight, N. Bays, P. Knight, C. Anderson, A. Thomas, A. Penrod, A. Breitweiser.

SECOND ROW:

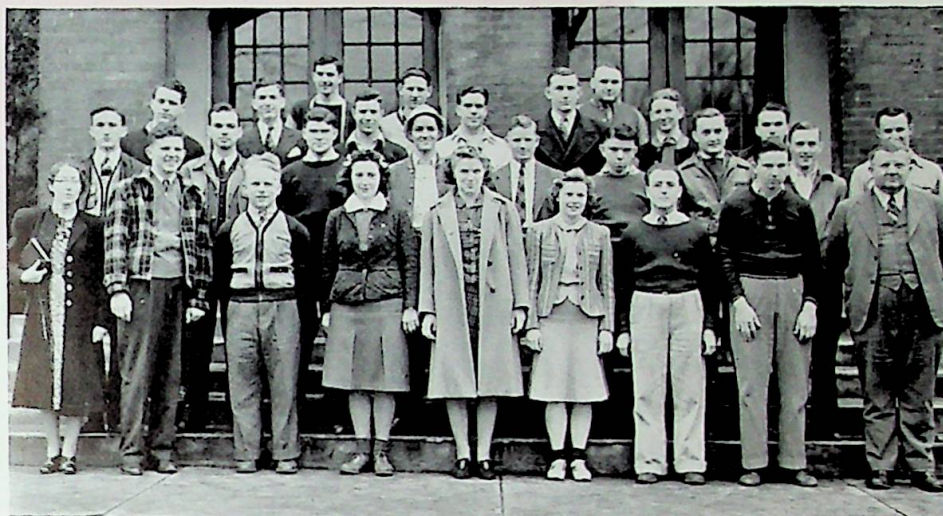
W. Metsker, L. Coats, J. Wilson, A. Coffing, O. Fender, E. Ellis, M. Edmondson, W. Campbell, O. Nay, R. Albrecht.

DURING the 1939-40 school year the Art Club has enjoyed its most successful year since its founding in 1937. The Club was founded for the purpose of creating a wider interest in Art. It is composed of all students interested in the subject.

The Club introduced a new type of program which dealt directly with Modern Art. Among the subjects brought to the attention of the members of the Club were Indian Art, Spanish Art, Modern Photography, Fine Art at the New York and San Francisco Fairs, and Walt Disney's Art. Social events held this year were parties on Christmas, Valentine Day, Easter, and exhibits from Indianapolis and Indiana University. The annual school art exhibit and tea will be held in June.

The officers for the year are: Alberta Thomas, president; Opal Fender, secretary; Charlotte Anderson, treasurer; Faye Nicholas, reporter; James Wilson, sponsor.

PHY-BI-CHEMS



FRONT ROW:

Miss Whitney, W. Ratliff, C. Baughn, M. Griggs, C. Anderson, M. Wheatley, J. Christie, J. Hershberger, Mr. Brothers.

SECOND ROW:

L. Dalton, A. Myers, R. Downey, W. Young, L. Sayers, R. Kirts, H. Hallberg, E. Ryner, W. Jackson.

BACK ROW:

J. Wisheart, H. Norman, K. Kruger, C. Fleming, D. Austin, G. King, G. Doeden, H. Higgins, C. Newton, R. Northam.

THE Science Club was organized in 1937 under the name Phy-Chems. Members were students of Physics or Chemistry. In 1939 membership was extended to students of Biological Science. The purpose of the Club is to promote interest in current research and scientific events. Meetings are held monthly and consist of guest speakers, scientific demonstrations, educational movies, and some social events.

The officers for the year are: President, Leon Dalton; Vice-president, Kenneth Griggs; Secretary, Russel Northam; and Program Chairman, Herman Hallberg. Professor Brothers of the Physical Science Department and Professor Whitney of the Biological Science Department are the sponsors.

W. A. A.



FRONT ROW:

M. McCoun, M. Rudolph, J. Bell, C. Anderson, Dr. Dalton.

SECOND ROW:

L. Deer, O. Williamson, V. Williamson, F. Walter, A. Thomas, M. Myers, B. Myers.

THE Women's Athletic Association was organized in 1932 with the purposes of promoting athletic games for women and maintaining fairness and cleanliness in all sports. The motto is "Fight for Health".

Any girl enrolled in Central Normal College is eligible for membership when she has successfully passed the required achievement test.

Each member is given points for basketball, baseball, tennis, hiking, and archery. When a member has earned five hundred points she is awarded a large purple "N"; when she has earned one thousand points she is awarded a sweater; when she has earned two thousand points she is awarded a gold pin and guard.

Officers of the organization are: President, Charlotte Anderson; Secretary, Jeanette Bell; Treasurer, Mildred Record; Point Captain, Viola Williamson; Sponsor, Dr. Naomi Dalton.

S. C. A.



FRONT ROW:

Miss Watts, M. Steinman, R. Walter, R. Dawson, G. Lawler, H. Milling, Mr. Green.

BACK ROW:

L. Coats, W. Thomas, H. Parker, O. Williamson, J. Wisehart, C. Newton, E. Meeks, G. Doeden, C. Haehl, V. Keeney, H. Routier, E. Dinsmore, W. Mann.

THE Student Christian Association of Central Normal College is a part of the United Youth Movement which has as its theme, "Christian Youth Building a New World". All programs for the Association are planned with this general theme in mind. The programs stress such points as Personal Religious Living, Christian Economic Order, World Peace, Christian Patriotism, and Christian Home Life.

Highlights of this year's work were "The Friends from Home Day" and "Stunt Night", both of which are sponsored annually by the S. C. A.

Miss Bertha M. Watts and R. L. Green are sponsors of the organization. Officers for the past year were: President, Virginia Belle Keeney; Associate-President, Eunice Meeks; Secretary, Hazel Routier; Treasurer, Lowell Coats; Chairman of the Service Committee, Earl Dinsmore; Chairman of the Social Committee, Betty Cox.

For the present year Chez Haehl is President and Mary Steinman is Associate-President.

N. Y. A.



FRONT ROW:

A. Breitweiser, M. Hunt, M. McFerran, H. Allee, N. McVay, E. Meeks, M. Tharp, M. Griggs, A. Penrod, D. Amick.

SECOND ROW:

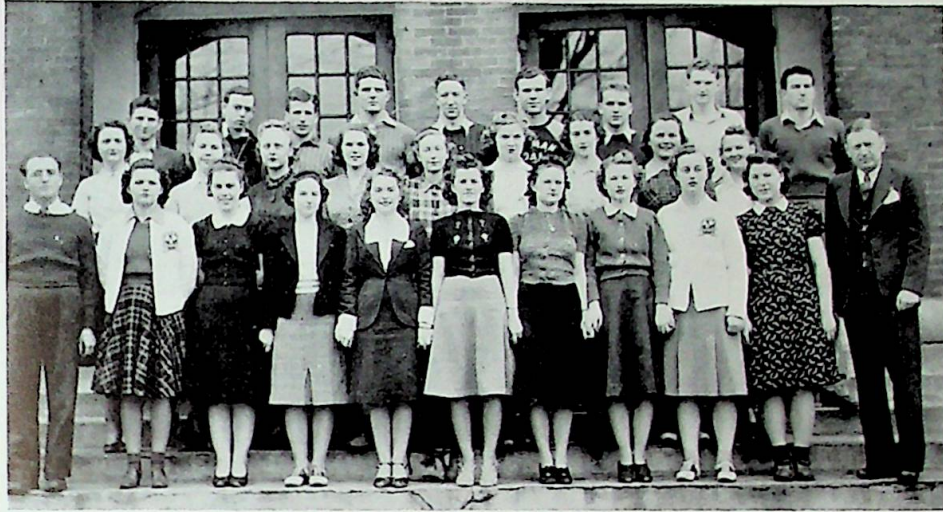
H. Routier, C. Baughn, J. Lovett, D. Bottorff, C. Nelson, H. Hopp, C. Garner, E. Walker, M. Smith, R. McHolland.

THIRD ROW:

A. Beumer, L. Swanson, G. Varga, E. Mounts, R. Albrecht, L. Dalton, G. Doeden, Dr. Hightower, E. Froh, J. Wisheart, R. McClung, R. Kirts.

THE college N. Y. A. program functions as an important working unit on the campus. As in years past, when there is work to be done, the N. Y. A. people can do it. All of the students on N. Y. A. have been selected on the basis of financial need, scholastic ability, and character. About fifty young men and women have earned nearly all of their tuition this year by N. Y. A. work, and at the same time have engaged in work which is of practical benefit to them in enlarging experiences and developing abilities. The N. Y. A. program without doubt meets a great need in Central Normal College.

BOOSTER CLUB



FIRST ROW:

J. Christie, M. Smith, D. Amick, M. Presser, M. McCoun, H. Milling, D. Thomas, M. Edmondson, B. Cooper, G. Jones, E. V. Kennedy.

SECOND ROW:

C. Nelson, M. Martin, H. Routier, M. Rudolph, J. Bell, C. Anderson, A. Thomas, B. Myers, B. Cox.

THIRD ROW:

R. Hanger, J. Huntington, F. Crum, I. Morrison, E. Smith, E. Younger, E. Snider, T. Janeway, N. Jackson.

THE Booster Club was organized January 10, 1939. It has lead a very successful life. At the present time there are thirty-six active members and nineteen pledges. Prospective members are chosen from those students who show an interest in boosting our Alma Mater.

Home-coming was welcomed in by a "snake dance" followed by a free show at the Royal Theatre for all students. The Club has concentrated on promoting pep sessions, decorating the gymnasium, and advertising athletic events.

The officers for the year are: President, Peggy McCoun; Vice-president, Everett Younger; Secretary-treasurer, Tom Janeway; Athletic Adviser, Morris Etter; News Hawks, Dorothy Amick and Margaret Martin; Sponsor, Mr. E. V. Kennedy.

ATHLETICS



BASKETBALL

CENTRAL NORMAL 43

TAYLOR U. 28

After several weeks of practice the Warriors were faced with the Taylor University five. The following started the season's game for the Warriors: Farr, Williams, Shaw, Cash and Bell. Paced by Tom Janeway it was an easy victory for the Warriors.

CENTRAL NORMAL 33

ANDERSON COLLEGE 43

On the night of Dec. 12 Anderson College traveled here to try their luck with the Warriors. Farr led for Central Normal and Van Dyke starred for Anderson.

CENTRAL NORMAL 50

OAKLAND CITY 26

The Warriors took on the Oaks from down south and sent them home on the short end of the scoring. Younger was high point man for the Warriors.

CENTRAL NORMAL 50

HUNTINGTON 32

Leaving the home court for the first time in the season the team traveled to Huntington and when the gun sounded C.N.C. had won. Cash was the high point man.

CENTRAL NORMAL 40

OAKLAND CITY 50

January 9 was the second defeat of the season and was given at the hands of the southern Oaks. This also marked the second high point man, Tom Janeway.

CENTRAL NORMAL 47

N. A. G. U. 33

Two nights later the team returned to their home court to clash with N.A.G.U. Hot for a win they tossed the ball through the hoop for a 47 to 33 victory.

CENTRAL NORMAL 27

INDIANA CENTRAL 42

Meeting Central Normal for the first time in a good many years the Greyhounds of Indianapolis handed the Warriors a burning defeat at the Greyhound kennels. Farr for the locals and Crowe for the Greyhounds were high point men.

CENTRAL NORMAL 35

ST. JOSEPH 46

On Jan. 16 St. Joseph traveled here for their first game with the Warriors. After a hard fought battle the up-staters took the decision. Shaw was high point man.

CENTRAL NORMAL 43

HUNTINGTON 27

This game marked the second encounter with the Huntington team. The Coach played many of his reserves, saving his regulars for Indiana Central.

CENTRAL NORMAL 22

INDIANA CENTRAL 45

On the fateful night of Jan. 23 the Greyhounds started the dash down our court. It was a fast game but the Warriors were subdued a second time.

CENTRAL NORMAL 48

NORTH MANCHESTER 43

North Manchester journeyed here from up state for their first game with the Normal team. All during the game the score was back and forth but in the final minutes of play the Normalites gained a decisive lead.

CENTRAL NORMAL 54

ST. JOSEPH 70

This game at St. Joe proved to be a high scoring encounter. C.N.C. took an early lead but soon relinquished it. Janeway was high point man with 16 points.

CENTRAL NORMAL 53

NORTH MANCHESTER 41

North Manchester didn't afford much competition as the Warriors trampled them by 12 points. The game was paced by Cash who netted 11 points of the 53.

CENTRAL NORMAL 41

VALPARAISO 58

Feb. 15 found the Warriors at Valparaiso. This trip was an over-night one but the team didn't enjoy it after the reading of the score.

CENTRAL NORMAL 45

EASTERN ILLINOIS 39

All the way from Illinois came this team to bow to the Warriors.

CENTRAL NORMAL 40

EASTERN ILLINOIS 45

C.N.C. traveled to Charleston, Ill. for a defeat. Janeway was outstanding.

CENTRAL NORMAL 58

VALPARAISO 59

Feb. 28 marked the final game and what a game! Tied at the final period and then a red hot over time; finally Valparaiso won by one point. Janeway hit everything but the officials as he scored 22 points.

BASKETBALL



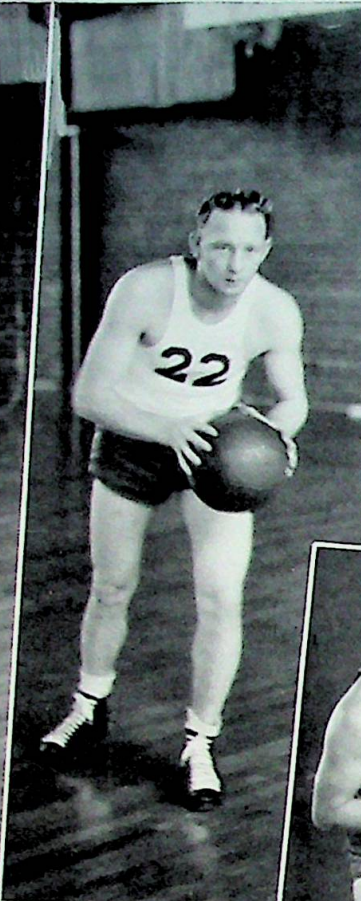
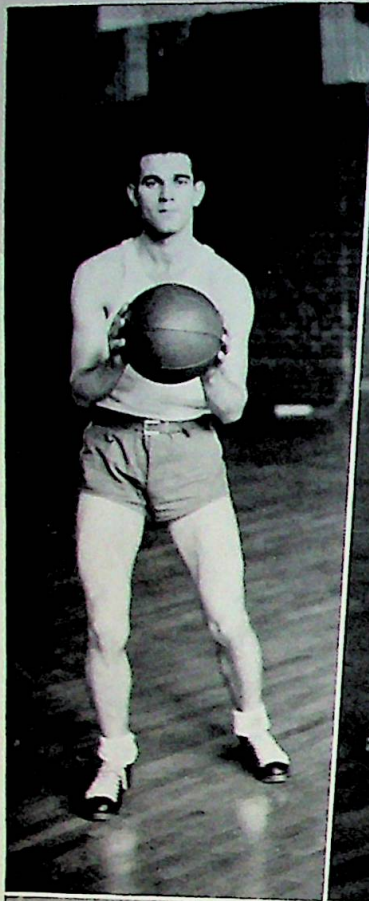
"Go in there and fight."

"He flies through the air with the greatest of ease."

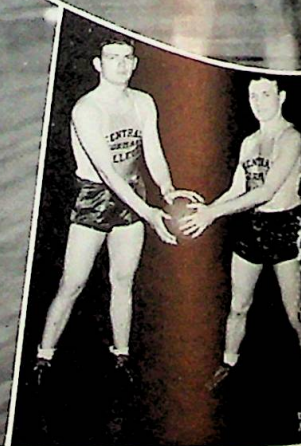
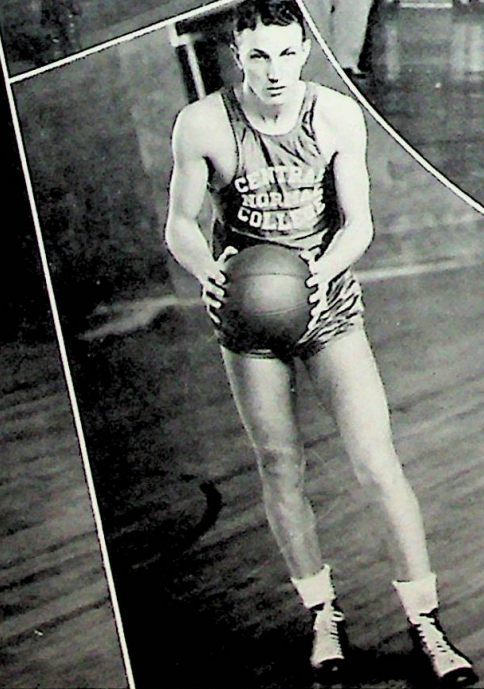
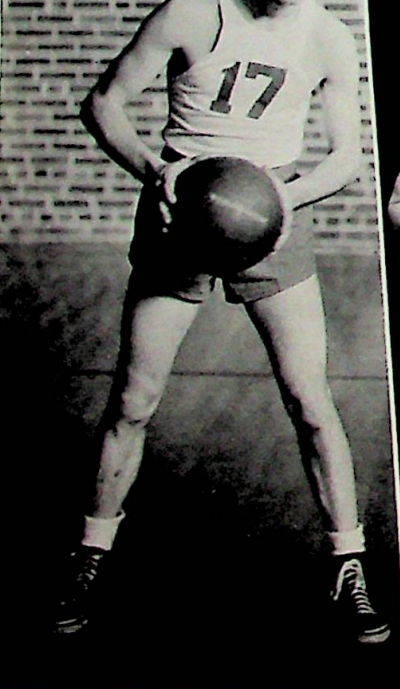
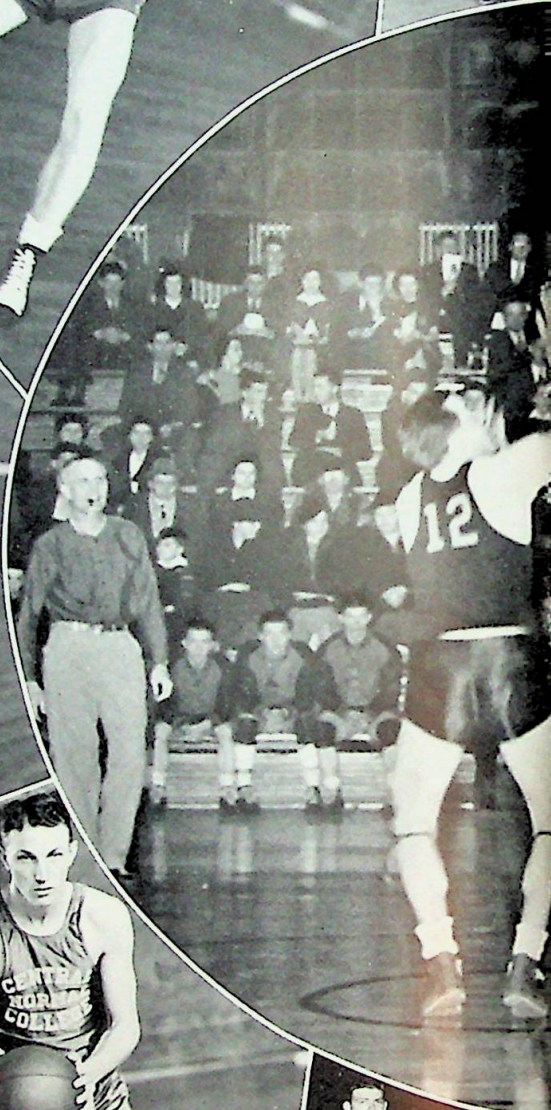
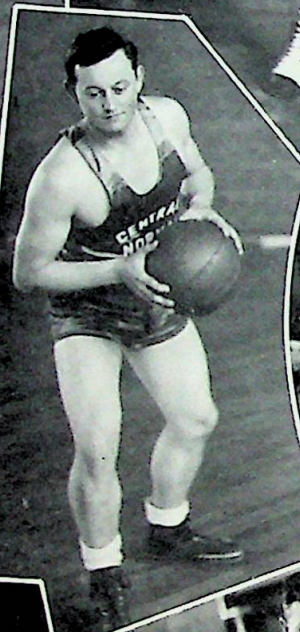
"Williams towers above his opponents to gain the tip-off."

"Homecoming Game with North Manchester."

YEA TEAM



... ..





LETTERMEN



COACH SEWELL LEITZMAN

FIRST ROW:

Jack Kennedy, Richard Falls, Joe Fox, Bernard Deer, Warren Horton, Morris Etter, Jim Allen, Joe Redling, Melvin Farr, Tom Janeway.

SECOND ROW:

Lloyd Hensley, Walter Jackson, Everett Younger, Willard Brown, Sam Williams, Stanley Balcerzak, Bob Shank, Jack Shaw.

THIRD ROW:

Danny Waymire, Gordon Jay, J. Bocskey, Ernest Collner, Joe Mackowiak, Ted Tarwacki, Alex Boalbey, Casimer Gorniewicz, Norman Bell.

FOOTBALL

CENTRAL NORMAL 0

C. N. C. opened the season with a wealth of Lettermen and promising material. Eastern Illinois presented the opposition for the first game of the season. Eastern Illinois opened up with a powerful running attack that left the unconditioned Warriors bewildered. They proceeded on to defeat the Warriors by the score of 16 to 0. The great defensive play of Joe Reeling, a freshman of South Bend, made him the outstanding man on the field for C. N. C.

EASTERN ILLINOIS 16

CENTRAL NORMAL 0

The following Saturday the powerful Earlham eleven invaded Tiber Field as the Homecoming foe of the Warriors. Earlham's hard running backs scored early in the first half but were held powerless in the last half against the great defensive work of the C. N. C. line and backfield. Kelley and Boalbey played outstanding ball.

EARLHAM 6

CENTRAL NORMAL 0

The next Saturday the Warriors invaded the lair of the powerful Manchester eleven. Clarence Kelley had been made line coach during the previous week of practice. Central Normal's hard charging line held the running attack of Manchester powerless but our backs were unable to stop the great passing attack of the Manchester eleven. Etter played an outstanding game in the line for C. N. C.

NORTH MANCHESTER 41

CENTRAL NORMAL 28

The next Saturday found the Warriors at Defiance, Ohio. The Warriors scored in the first ten seconds of play as Redling sped down the field and covered the ball on the kick off giving the Warriors six points. Clark drop kicked the extra point. A few plays later in the first quarter Jim Allen sped around his own right end for thirty-five yards and another touchdown for C. N. C. Clark again kicked the extra point. C. N. C. was held scoreless in the second quarter and led at half time 14 to 0. In the third quarter Swartz took a lateral pass from Bell and sped down the sidelines for eighty yards and another six points for C. N. C. A pass, Bell to Tarwacki, was good for the twenty-first point. In the same third quarter Clark sped around his own left end for another touchdown making the score 27 to 0. He also kicked the extra point.

DEFIANCE 0

CENTRAL NORMAL 7

Next on the Warriors schedule was Franklin. This was a game marked by the wonderful defensive play of the Central Normal line. This line at one time in the game held the Franklin eleven from scoring on the six inch line when Franklin had four downs to make it in. The game was scoreless at halftime. In the fourth quarter Boalbey raced through right guard for twenty-five yards and a touchdown. Bell also went through guard for the point after touchdown.

FRANKLIN 0

CENTRAL NORMAL 19

The Warriors made one of the greatest come-backs in football history in the closing game of the season at St. Joe. St. Joe's great offensive skill had given them a lead of 20 to 0 with but seven minutes to play. Central Normal lined up in spread formation with Boalbey back. He took the ball and raced through his own left guard for eighty yards and a score for C. N. C. A pass to Balcerzak netted the point after touchdown. Central Normal kicked off to St. Joe. On the first play, Burch, C. N. C. tackle, stole the ball and sped toward the goal line but was brought down from behind. Bell carried the ball across for the Warriors and made the score 20 to 13. Boalbey missed the try for the extra point. With Boalbey again leading the way Central Normal fought its way to the goal line and scored again.

ST. JOE 20

This final game ended the careers of three football lettermen:

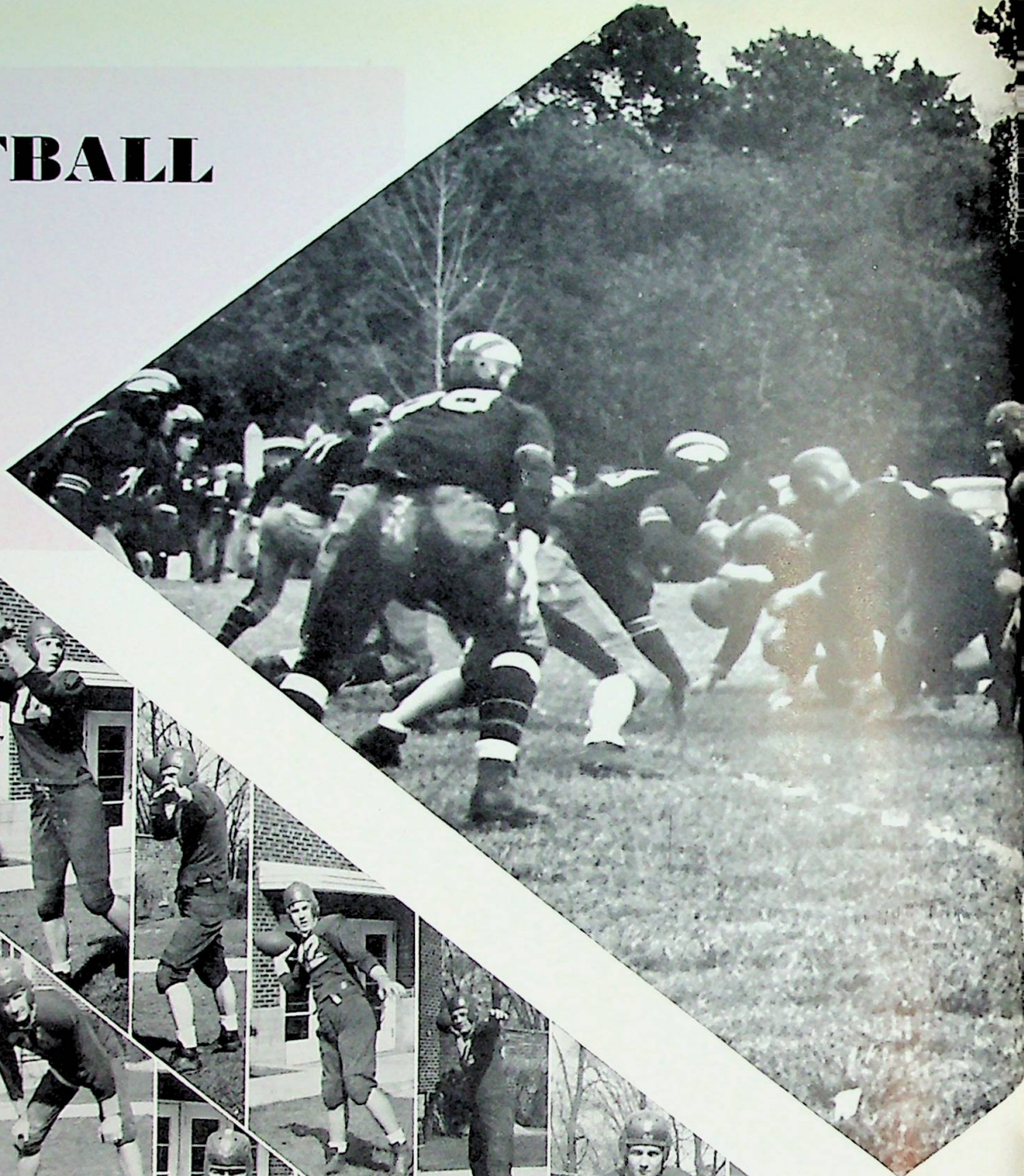
CLARENCE KELLEY of Mishawaka, a letterman for four years, captain of the 1938 eleven and assistant coach of the 1939 eleven, honorable mention All State center 1939.

JACK KENNEDY of Linton, a letterman for three years, co-captain of the 1939 eleven.

RICHARD FALLS of Glezen, a letterman for two years, co-captain of the 1939 eleven.

The future prospects on the Central Normal gridiron look very bright as Coach Leitzman will open up next fall with a wealth of experienced lettermen. This group will include Alex Boalbey who made Honorable Mention All State 1939.

FOOTBALL





BASEBALL

CENTRAL NORMAL 4

BALL STATE 13

In a down pour of rain the two teams went on the field for the first time in the 1940 campaign. Charles Worrell was the starting pitcher and Sam Blue, the catcher. Normal scored almost all their runs the first inning but was defeated by a score of 13 to 4. The game was called at the end of the seventh as there was too much mud in the infield and the grass was too slippery in the outfield.

CENTRAL NORMAL 0

ST. JOSEPH 3

This was the first game away from home and the first time the Normals played St. Joseph. C.N.C. had ten hits with no runs and St. Joe had four hits with three runs. Worrell pitched and Blue caught.

CENTRAL NORMAL 4

INDIANA CENTRAL 5

The game played at the Greyhound field gave them a one run advantage. Brown started on the mound and Balcerzak was behind the plate. A home run by Worrell was the highlight of the game. Jake Hanger, the third baseman, was injured and taken from the game in the seventh inning.

CENTRAL NORMAL 7

MANCHESTER 2

The up-state team traveled here on May 10; went home with a defeat to their record; and Central Normal had won their first game of the season. Worrell was the starting pitcher.

CENTRAL NORMAL 2

ST. JOSEPH 7

St. Joe traveled here May 14 and handed C.N.C. their second defeat by the same team. Worrell was on the mound for Normal and Blue was catching. Weakness in the outfield seemed to be the downfall of Normal's team with a few errors in the infield.

The regulars were: Worrell, Blue, Deerr, Swartz, Hanger, Smith, Kennedy, Waymire, and Brown. Substitutes were: Carter, McGrady, Balcerzak, Janeway, and Shank.

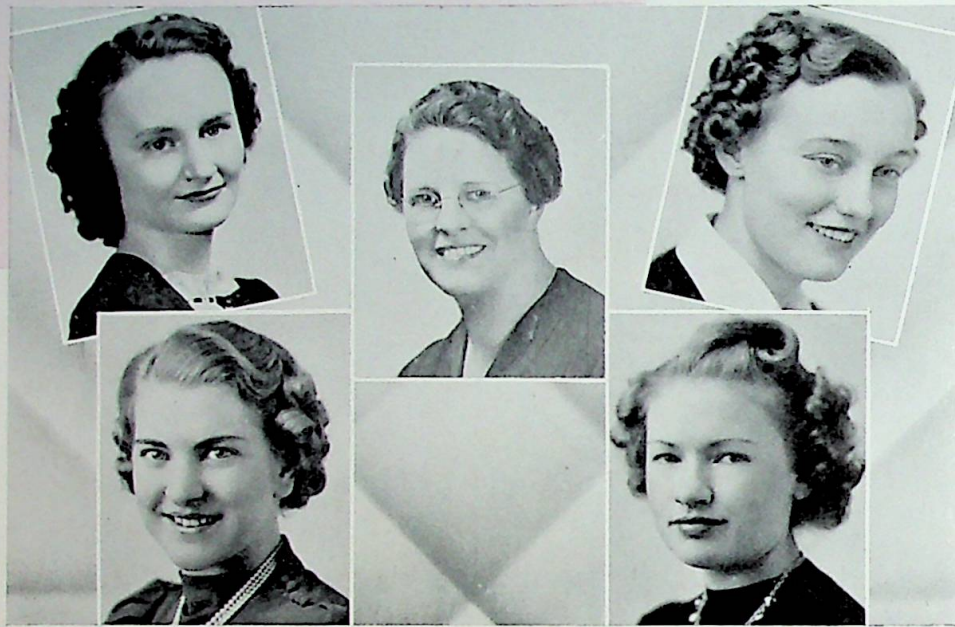
BASEBALL AND TRACK





SORORITIES

PSI CHI OMEGA



President
KATHLEEN WILLIAMS

Vice-President
BETTY LOU COOPER

Sponsor
MRS. NORRIS PORTER

Secretary
RUTH TERRY HESS

Treasurer
MAXINE EDMONDSON

In Memory
of
MRS. ALICE COX
Housemother

Organized 1909

*Psi Chi Omega Sorority
We're the girls of the C. N. C.
We stand for truth and love and loyalty
We'll remember you all, wherever you be
Purple and white our colors true
Dear Psi Chi we're all for you
Phi Chi Omega Sorority
We're the girls of the C. N. C.*

Dorothy Amick
 Alice Amy
 Margaret Boots
 Doris Bottorff
 Naomi Carlin
 Elizabeth Carter



Anne Christie
 Bertha E. Christie
 Betty Cox
 Donna Cox
 Ruth C. Dawson
 Betty Dove



Joan Griffey
 Carol Harrison
 Marguerite Harrison
 Rebecca B. Hendricks
 Florence Higgins
 Georgia Jones



Helen Jones
 Ruby Kearns
 Virginia B. Keeney
 Amanda Leak
 Margie Little
 Mary M. McCoun



Rosamond McHolland
 Evelyn McClain
 Janice Mallory
 Margaret Martin
 Eunice Meeks
 Erma Milam



Harriett Milling
 Inez Monninger
 Helen Parker
 Mary Pierpont
 Maxine Presser
 Hazel Routier



Irene Smith
 Mary Lou Smith
 Maggie Lee Smith
 Mary Steinman
 Mary M. Tharp
 Ruth Wade



Robert Walter
 Marie Ward
 Margaret Wetzel
 Mary Wheatley
 Idaperl Williams
 Evelyn Workman



ALPHA THETA EPSILON

THROUGHOUT the past year the Alpha Theta Epsilon Sorority has been very active and many happy and interesting times have been enjoyed by the girls. Among them were the two chili suppers, the co-sponsorship of the Pan-Hellenic Dance, the Winter Sport Dance, the annual softball tourney and the Birthday Dance in May.

The success of the year has been the result of the cooperative effort of the officers, members and Honorary members and to the loyal leadership and guidance of the beloved sponsor, Mrs. Johnson.

At the present time there are forty-two active members on the campus and eight pledges. The Honorary members are: Mrs. Daisy Marvel Jones, Mrs. R. L. Green, Miss Nancy Baird, Miss Lorene Orr, Mrs. Leslie Steinbach, Mrs. William Collins, Mrs. Joseph Gibbs, Miss Esther Whitney, Mrs. Blanche Wean, Mrs. Helen Eikman, Mrs. Fanchon Griffey, Mrs. Glen Hovermale, Mrs. Mildred Elson and Mrs. Nellie Beagley.

MARIAN EDMONDSON
President

HENRY ETTA ALLEE
Vice-President

MARY B. JOHNSON
Sponsor

CHARLOTTE ANDERSON
Secretary

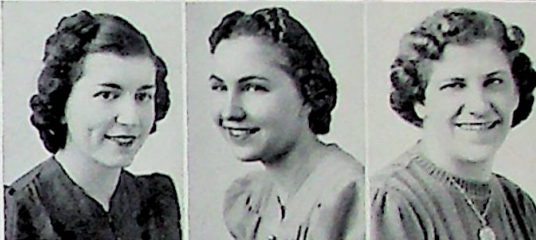
DOROTHY THOMAS
Treasurer



KATHRYN ARNOLD
THELMA BARNES
JEANETTE BELL



BETTY CURRY
IONA HERSHBERGER
HELEN HOPP



RUBY HUFF
MARY HUNT
CATHERINE JONES



PAULA F. KNIGHT
EVA LETSINGER
LENORE McCAMMACK



MARY L. McFERRAN
NELLIE McVAY
ELEANOR MILLER



IOLA MOORE
BETTY MYERS
CAROL NELSON



MARTHA RUDOLPH
ALBERTA THOMAS
PHYLLIS WATSON



DELTA SIGMA KAPPA

THE Beta Chapter of the Delta Sigma Kappa (national) Sorority was founded at Central Normal College June 19, 1932 with eighteen charter members. The purpose of the organization is for social and fraternal benefits to its members and to encourage social, moral, and educational advancement.

To become a member a girl must be of high moral character and have a scholastic average of B.

Two new chapters have been formed at Indianapolis during this year. There are now twenty-two chapters located in various parts of Indiana, Michigan, Illinois and Ohio.

The National Convention was held under the sponsorship of the Alpha Chapter at Lafayette on May 25 and 26, 1940.

The sorority has been under the guidance of Mrs. A. J. Wilson, sponsor and Dr. Naomi Dalton, assistant sponsor. There are four patronesses, Mrs. J. H. Vaughn, Mrs. S. M. Hendricks, Mrs. M. O. Williams, and Mrs. M. Joseph.

Sixty-six active members will again assemble for their Eighth Anniversary which will be observed June 16, 1940 in the Reception Room.

MARY ALICE HUSTON
President

MRS. A. J. WILSON
Sponsor

ALICE MARKLAND
Vice-President

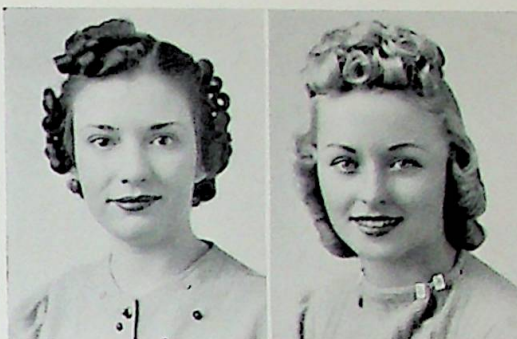
EUDORA ELLIS
Secretary

VALENTINE PLEASANT
Treasurer



MARIAN ARMSTRONG

NONA BAYS



EUNICE BEARD

ANNA MAE COFFING



LOLA FARRELL

MARY JO FULTON



ELLENA V. HUGHES

MILDRED HUNT



MARY ELIZABETH MYERS

MILDRED RECORD





SORORITY SNAPS



FRATERNITIES

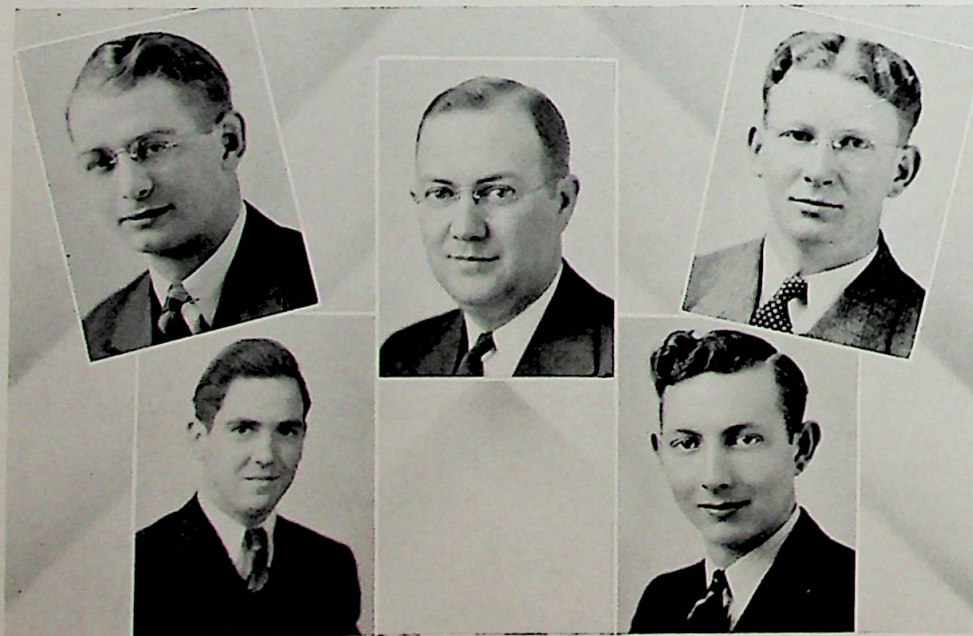
ALPHA MU KAPPA

ALPHA Mu Kappa was organized on this campus in 1933. A group of ambitious young men saw the need of an organization for the uplifting of the social, moral, and intellectual standing of the men at Central Normal and answered this need by establishing this fraternity.

The group has grown to be the largest and most powerful fraternity on the campus, having approximately one hundred forty members.

The yearly activities of Alpha Mu Kappa consist of four smokers, one held during each term and one after the homecoming game. The fraternity has two semi-formal dances for its members—one in the fall and the much looked forward to dinner-dance in June which climaxes the School year socially.

Mr. Wallace, Professor of Commerce, was taken in as an honorary member this year and chosen as the sponsor. Dean Green, Dean of Men and head of the Mathematic Department, was also chosen as an honorary member.



SAMUEL EGGERS
President

MR. WALLACE
Sponsor

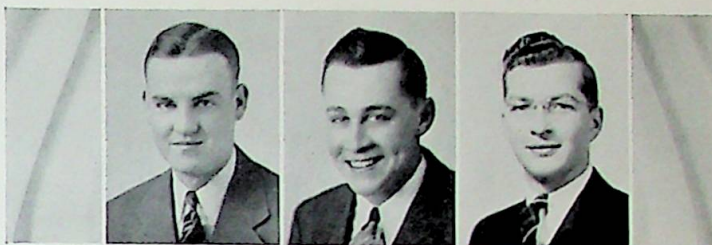
CHARLES NEWTON
Vice-President

MEREDITH PAYNE
Secretary

EARL CRISLER
Treasurer

A. M. K.

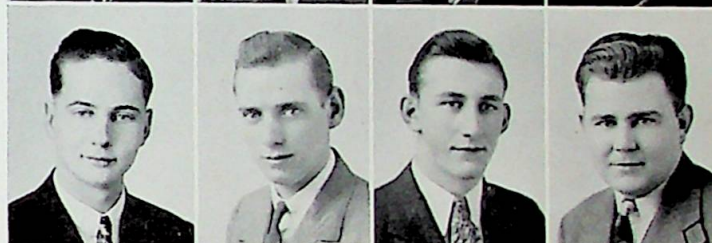
LOUIS AIKMAN
MAX BELL
ALVIN BEUMER



JAMES CHRISTIE
LOWELL COATS
THAD CRAMER
LEON DALTON



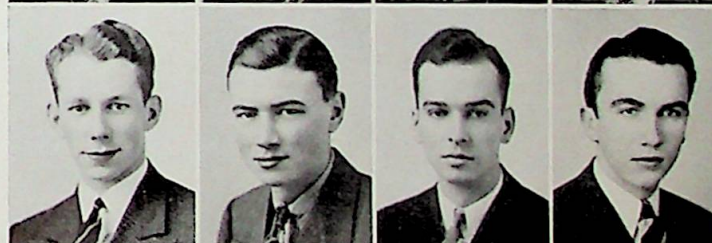
PAUL DEICH
KENNETH DICKERSON
GERALD DOEDEN
ERNEST FERGUSON



CHEZ HAEHL
DALE JACKSON
JOHN HERSHBERGER
GLEN MCINTOSH



ERNEST MAUCK
ELWOOD MOUNTS
AUSTIN MYERS
RUSSELL NORTHAM



WILLIAM RATLIFF
LESLIE SAYERS
PHILIP SHAW
LEE ROY STOCKTON



LAWRENCE WEITKAMP
LAURENCE WHEATLEY
JAMES WISEHART
EDWIN ZARSE



ZETA SIGMA

THE Indiana Alpha Chapter of Zeta Sigma was installed on the campus of Central Normal College in 1935. The fraternity takes its members from the talented young men of the campus and helps these young men to realize the goals which they have set.

This year has been a very successful one. The two semi-formal dances held in the fall and winter terms, featuring Bob Hiatt and his Eight Counts of Rhythm and Jack McCortney, have been the highlights of the social calendar. The annual barn dance held in the shelter house at the park climaxed the year.

Under the direction of its sponsors, President Virgil Hunt and Professor E. V. Kennedy, the fraternity is outstanding in its athletic and scholastic affairs and has the best of social functions on the campus.

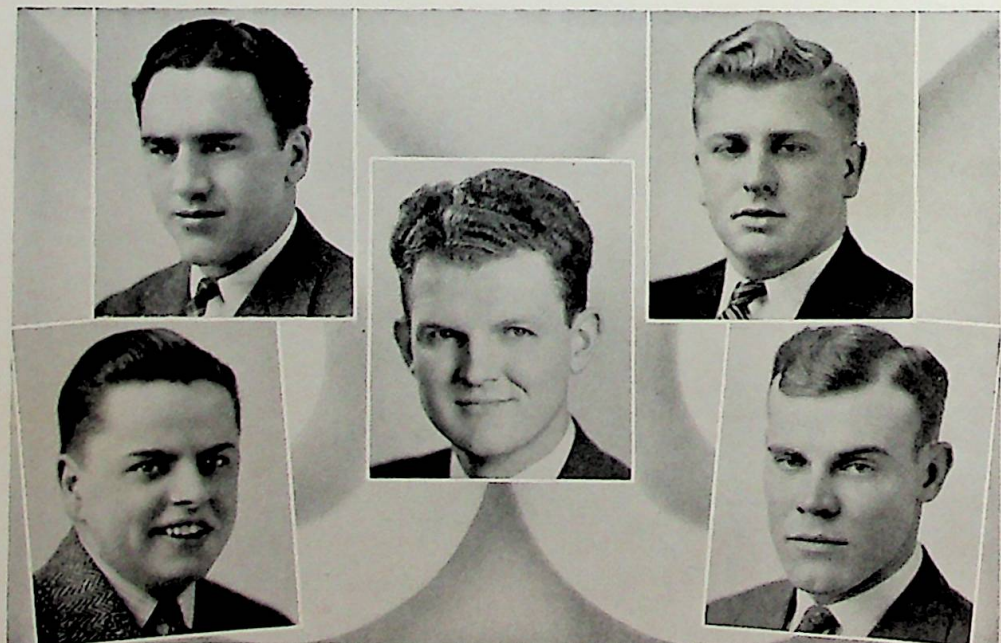
JACK KENNEDY
President

RICHARD FALLS
Vice-President

PRESIDENT HUNT
Sponsor

PAUL PARKER
Secretary

JOE FOX
Treasurer





ZETA SIGMA

FIRST ROW:

R. Duncan, C. Underwood, J. Kennedy, R. Jay, C. Fleming,
C. Worrell, J. Harrison.

SECOND ROW:

L. Hensley, G. Jay, M. Cobb, M. Farr, R. Shank.

THIRD ROW:

M. Troutman, R. Hall, J. Fox, W. Jackson, N. Bell, R.
Joseph, G. Tatman, D. Waymire, E. Ryner, C. Baughn,
K. Matthews, R. Falls, R. Bunton, E. Snider, Coach Ken-
nedy.

FOURTH ROW:

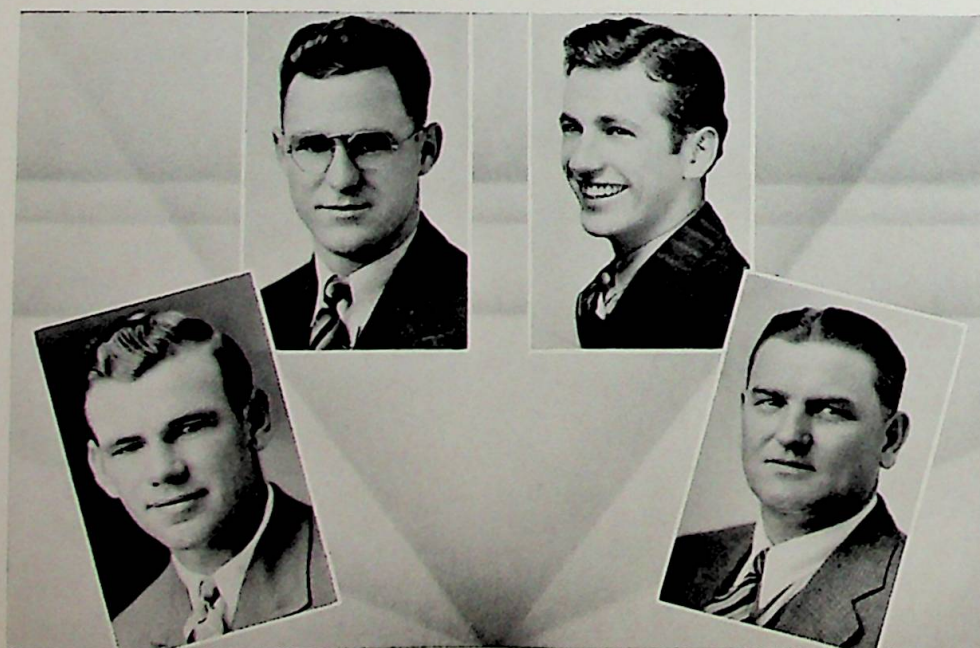
R. Cash, C. Alsop, H. Meeks, B. West, W. Falls, R. Harsh-
barger, L. Warren, Pres. Hunt, T. Janeway, W. Brown,
T. Tarwacki, C. Gorniewicz.

SIGMA LAMBDA PI

THE Sigma Lambda Pi Fraternity was organized by leaders in Athletics in the year of 1932 at Central Normal College. This fraternity is the athletic fraternity of the campus. One of the main purposes of the fraternity is to help promote better and bigger athletics. This fraternity symbolizes leadership, sportsmanship, and loyalty.

Under the capable leadership of the following officers the Sigma Lambda Pi Fraternity has grown from the smallest fraternity on the campus to the largest: President, Morris Etter; Vice-President, Floyd Crum; Secretary, Alexander Boalbey; Treasurer, Everett Younger.

The activities of the fraternity have been many and varied. A very successful dance was held in the winter term. The annual Spring Sport Dance was held on April 27. The Sig Pi "A" team went undefeated in the Intramural basketball league. A new constitution was written and adopted during the Spring term. Board and Room was started in the Spring Term at the fraternity house.



MORRIS ETTER
President

FLOYD CRUM
Vice-President

EVERETT YOUNGER
Secretary-Treasurer

COACH LEITZMAN
Sponsor



SIGMA LAMBDA PI

FIRST ROW:

Horton, Varga, Younger, Boalbey, Deer, Etter, McGrady,
Lawson, Allen, Cornelius, Berget, Priest.

SECOND ROW:

Bridges, Goff, Miller, Eller, Young, Mosteller, Hardsaw,
Nicholas, Mackowiak, Morrison, Riggle, Shaw, Downey,
Barnes.

THIRD ROW:

Huntington, Spray, Smith, Weddle, Garwood, Collner,
Burch, Moore, Cook, Jackson.



FRATERNITY SNAPS



EXTENDING GREETINGS
To The Class of 1940
And To The Students and Friends Of
CENTRAL NORMAL COLLEGE

DANVILLE



The Members:

Rawleigh Baker	Virgil Hunt
A. G. Blair	John Kendall
E. M. Blessing	Robert King
E. D. Crawley	L. C. Morris
C. A. Edmonson	J. R. Parrish
Dr. Mount Frantz	E. J. Roberts
Dr. J. H. Grimes	A. D. Roul
Otis L. Gulley	Glen Tharp
F. Brewer Hadley	L. G. Vannice
George Hadley	H. M. Whisler
Alvin Hall	N. E. Winfrey

Harold Yarling



Danville Commercial Club

To the Class of 1940

CONGRATULATIONS!

In felicitating the graduates of 1940, we wish you to know that one of the fundamental objects of the Commercial Club of Danville is to foster and create a spirit of generous consideration among the peoples of the town of Danville and the student body of Central Normal College.

We hope that through your association with us that you have realized a great benefit in the civic and social association with the business men and townspeople. By your active interest in your school work you are realizing a successful ambition accomplished and may the joy of this accomplishment carry you out of "school life" into "life's school", and if the friendships you have formed here will inspire you to take an active interest in the civic, commercial, social and moral life of the community in which you go we will be truly glad.

May your chosen work bring happiness and success to all of you. In the years to come you will look back on your days at Central Normal College with fond memories — memories that will bring you back to Danville. You will find a welcome here always.

CONGRATULATIONS
To All
GRADUATES from C. N. C. for 1940
And BEST WISHES to All Remaining
Students

You who are on the threshold of new responsibilities should well consider seriously your responsibilities to society if you are to rise beyond that of just receiving pay for what you do.

MAY WE ASSIST YOU WITH YOUR TRANSPORTATION PROBLEMS.

WE ARE DEALERS FOR
DODGE — PLYMOUTH AND DODGE TRUCKS
DEPENDABLE USED CARS AND TRUCKS
MARATHON GASOLINE PENNZOIL MOTOR OIL
PENNZOIL SAFETY SYSTEM
FOR CORRECT LUBRICATION

E. J. ROBERTS GARAGE

38 N. Wash. St.

DANVILLE, IND.

Phone 499

Compliments of
DINSMORE'S MARKET

Compliments of
HOUSMAN'S RESTAURANT
and
MEAT MARKET

CIRCLE ENGRAVING COMPANY

151 East Maryland Street

Indianapolis, Ind.



PHOTO ENGRAVING

HALFTONES

ETCHINGS

COLOR PLATES

COMMERCIAL ART

DESIGNING

PHOTOGRAPHY

RETOUCHING

FRENCH'S CAFE

Super Quality Foods
Home Made Ice Cream

Open All Night

DINE AND DANCE

Plainfield

Indiana

STUDENTS

GENERALLY KNOW THAT BALLARD ICE CREAM IS THE VERY BEST THAT CAN BE HAD.

YOU CAN'T FOOL THEM

BALLARD ICE CREAM CO.

BASTIAN BROTHERS CO.

Manufacturing Jewelers & Stationers
Rochester, N. Y.

Designers and producers of emblems for high school clubs. Write for free catalogue.

Engraved Name Cards

Mr. E. E. Butterbaugh, Dist. Mgr.
1901 Salem Avenue
Dayton, Ohio



Compliments
of
**PREWITT
THEATRE**
Plainfield, Indiana



MY BEST WISHES
**WALT BRADFORD'S
IMPERIAL ACES**

DANCE ORCHESTRA
1338 Sharon Ave. Indianapolis

Compliments
of
THE GAZETTE
Danville

SPRING HILL
Dine and Dance
For Better
Steaks and Chicken Dinners
Visit
SPRING HILL CAMP

Compliments
of
**PARRISH
DRUG STORE**

Compliments
of
STATE LIFE INSURANCE CO.
Leonard O. Redden, Representative

Compliments
of
GEORGE W. HADLEY
Attorney

Compliments
of
American Beauty Parlor
Danville Phone 211

McLEAN STUDIO
Official Centralian Photographer

CHARTERED BUSSES

For All Occasions

PARTY COACHES OUR
SPECIALTY

DE LUXE PARLOR COACHES

BEI mont 5012

TONY'S SAFETY
COACH LINE

6215 West Washington St.

THE CAMPUS DRUG STORE FOR CNC STUDENTS

Where the Students Meet With
Their Friends For
Dancing and "Good Clean Fun"
at

"THE CENTRAL RENDEZVOUS"
Above the Store



DRUGS : PRESCRIPTIONS : TOILETRIES
SANDWICHES : ICE CREAM

James R. Alley, Registered Pharmacist
Eleanor Alley

DANVILLE DRUG STORE

Next Door to Royal Theatre
East Side Square

"You Are Always Welcome"

Compliments of

NANCY'S BOOKSTORE

Next to the Library
in the
Recitation Hall

Served You Since 1891

THOMPSON DRUG CO.
THE REXALL STORE

N. Side Square

Danville, Indiana

Compliments of

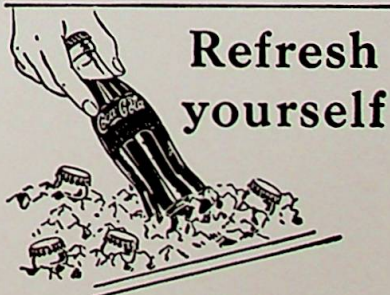
ROYAL THEATRE

Danville

Compliments of

GOODWIN'S BAKERY

Danville



Refresh
yourself

DRINK
Coca-Cola

TO THOSE WHO ARE TO
TEACH GREGG SHORTHAND

There is available for your use in teaching Gregg Shorthand: (1) courses of study, (2) teacher's manuals, (3) methods books, (4) a wealth of supplementary text materials, and (5) the richest variety of basic textbooks yet devised for teaching a shorthand system. As a service to the teacher, there is no charge for courses of study, teacher's manuals, and the counsel of expert Gregg teachers.

You will find Gregg Shorthand (1) *easy to learn*, (2) *easy to write*, (3) *easy to read*, (4) *easy to teach*.

It is taught in more than 99 per cent of the public school systems of the United States that teach shorthand.

We are interested in your success, and invite you to write our nearest office for teaching counsel or for advice on teaching materials that will attain the particular objective that you wish to reach.

THE GREGG PUBLISHING
COMPANY

New York - Chicago - San Francisco
Boston - Toronto - London - Sydney

Compliments of

PUBLIC SERVICE
COMPANY
OF INDIANA

CONGRATULATIONS
TO CLASS OF '40



RUTH WADE C. H. BEVER
CHARLES CLARK ALBERT GRACE
FRANK BREWER HADLEY

HOUSE of HADLEY
North Side the Square

Compliments of

STILLWELLS CAFETERIA

RALPH E. STILLWELL
Proprietor

MORRIS FLORAL COMPANY

FLOWERS
For All Occasions

425 South Cross St. Danville, Ind.

HOWELL-GOODWIN
PRINTING COMPANY

Crawfordsville, Indiana

*

PRINTERS
OF
COLLEGE YEARBOOKS
HIGH SCHOOL
ANNUALS
AND
SCHOOL PUBLICATIONS

THE HOOSIER EDUCATIONAL
SERVICE, Inc.

Can help you find the right teaching position. We put persistent personal effort back of our registrants and enjoy the confidence of the hiring officials.

If interested in advancement, write for details, or better still call at our office for an interview. No charge for registration. Three very capable school men have been added to our staff to assist us in presenting your qualifications to hiring officials requesting our Service. Office hours from 8:30 A. M. to 5:00 P. M. daily including Saturday.

Floyd E. Williamson, Pres.
Jean Logan, Mgr.
317 Peoples Bank Building
Indianapolis

Compliments of
THE REPUBLICAN
HENDRICKS COUNTY'S
LEADING
PAPER

Compliments of
ERNEST O. RIDGEWAY
Jeweler & Optometrist

THE C. E. WARD CO.
New London, Ohio
Manufacturers of
CAPS AND GOWNS

Compliments of
OTIS E. GULLEY
Attorney

COLLEGE CRAFTER COMPANY
Springfield, Ohio.
Crested and Greek Letter Processing
on Jerseys, Sloppy-Joes, Hats and
Banners

HODSON SERVICE
STATION
94 E. Main St.
Danville

THE KEENEY
BOOK STORE

CHARLES PORTER
Photographer
Danville

FARMERS SUPPLY
COMPANY

Dependable Hardware
Service Dealers for
Farm Machinery
Glen Tharp, Prop.

Compliments of
THE COFFEE CUP
Frank Rhoades, Prop.

Compliments of
TAYLOR AND TAYLOR

Abstractors
and
Attorneys

D. F. ROBERTS
Funeral Director
Ambulance Service

Phone 88

Residence 76

CLINE CLEANERS

Cleaning Pressing Altering
Tailor Made Suits
East Side Square Phone 519-L
Reese Cline, Prop.

Compliments of
DANVILLE BUS LINE
Danville, Indiana

Compliments of
J. C. LOGAN
Mobilgas Service Station
145 East Main Street

CONCLUSION

NOW that we come to the end of another Centralian, although we've had a few difficulties and mix-ups, we've had a share of good times and are sorry that the end is so near. Confidentially though, it's a relief to get this book in bed. Now it's up to you to throw back the cover and peruse to your heart's content. In fifty years—although the book is worn, the pages dirty and the cover loose—you'll still enjoy reading the book—to your grandchildren.

—*Editor*

ACKNOWLEDGMENTS

Engraver
CIRCLE ENGRAVING COMPANY
Indianapolis, Indiana

Printer
HOWELL-GOODWIN COMPANY
Crawfordsville, Indiana

Photographs by
McLEAN STUDIO RAMOS PORTER
Danville, Indiana Indianapolis, Indiana

Autographs

