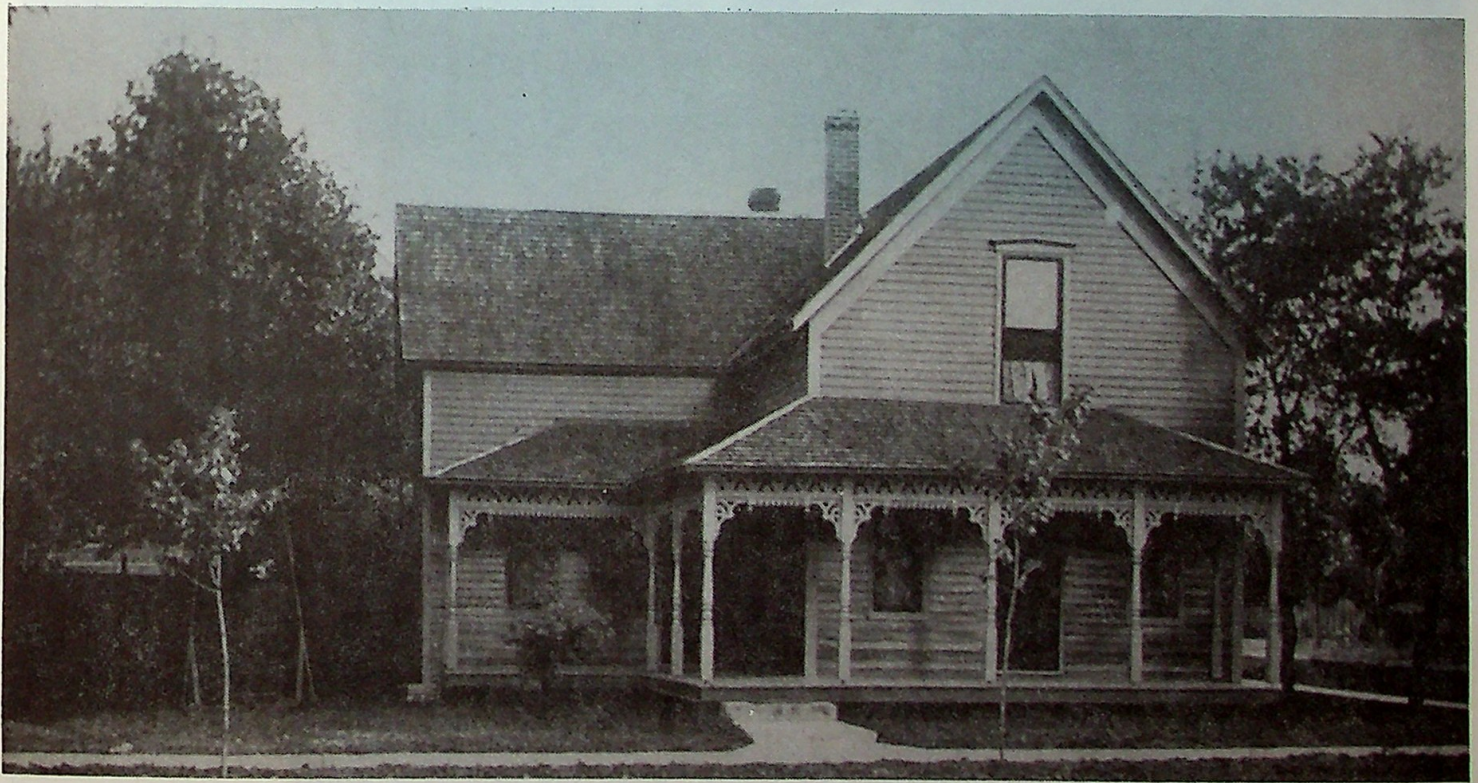


PHOTO



ALBUM

- *Featuring pictures from our readers* -



Clyde Laughner Home about 1910

This is a photo of the Clyde Laughner home as it looked about 1910. The house was located on the southeast corner of Turner and Bower streets in

Whitestown. The home was remodeled, and later was destroyed by fire.



The Laughner Family

Pictured above are Clyde Laughner, Gertrude (Sholty) Laughner, and daughters Esther May

(seated with mother), and Dorothy Myrtle. Photo was taken in 1905.

Photo courtesy of Esther Laughner Dulin.